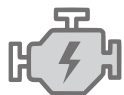


**S SERIES**

**S40-55**



**FORKLIFT TRUCK WITH DIESEL  
OR LPG DRIVE**

S40SD / S45SD / S50SD / S50D / S55D

S40SL / S45SL / S50SL / S50L / S55L



Ergonomic operator's  
compartment with plenty  
of legroom

Very clear visibility  
through the upright thanks  
to double primary cylinders  
on all uprights with free lift

Auto engaging electric  
parking brake with rollback  
protection on gradients and  
ramps

Large unrestricted  
entrance and exit

**SMART ■ STRONG ■ SAFE**



Pneumatic or SE-tyres (Solid)  
Capacity: 4000/4500/5000/5500 kg  
Diesel: EU Stage 5  
LPG: EU Stage 5

# FORKLIFT TRUCK WITH DIESEL OR LPG DRIVE **S40-55**

**S** SERIES

**These power packs are the perfect choice for indoor and outdoor applications - outstanding handling performance at low operating costs**

It does not matter whether for medium-heavy or intensive applications, the S-Series can be perfectly configured to your individual needs. It offers owners high productivity at an excellent total cost of ownership and operators the ultimate combination of ergonomics and safety.



#### **Powerful Industrial Engines**

For dynamic acceleration and reliable performance, modern industrial engines are used – the HDI DM03 for the diesel version and the Kubota WG3800 for the LPG variant. Both comply with the strict EU Stage V emissions standards.



#### **Ergonomic driver's seat with plenty of legroom**

The ergonomic driver's workplace offers operators plenty of headroom and legroom. Intuitive controls and hydraulic power steering ensure intuitive operation and high safety during an application.





### Safe entry and exit

The driver can reach his ergonomic workplace comfortably and safely via a large, low-set and non-slip step. The footwell is generously designed so that the driver has enough space even when wearing safety shoes.



### Auto engaging electric parking brake with rollback protection on gradients and ramps

A safe ramp application is made possible by the automatic parking brake, which is fitted as standard.

This means that the operator always has the truck under control, as unintentional rolling backward is prevented.



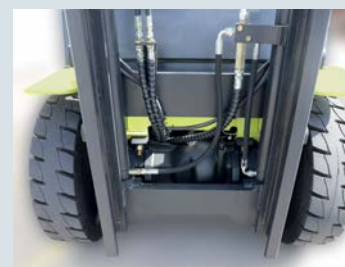
### Security and truck monitoring

The truck's 5" colour display can be used to programme an automatic engine shutdown when idling to save fuel. In addition, safety and warnings can be individually programmed. If a reversing camera is used, the image is transmitted to the colour display, so when the driver is reversing, they have an optimal view of any activity in their way



### Very good visibility through the mast thanks to double primary cylinders

All mast types with free lift are equipped with double primary cylinders. The driver therefore has a good view to the load and can work safe and productively.



### Wet Disc Brakes

Maintenance-free wet disc brakes are fitted as standard. Due to the low wear of the brakes, a long service life is guaranteed, which has a positive effect on operating costs.



# FORKLIFT TRUCK WITH DIESEL OR LPG DRIVE **S40-55**

**S** **SERIES**



**SMART** ■ **STRONG** ■ **SAFE**

**Wide range of safety features as standard  
along with the highest quality and  
reliability - simply SMART - STRONG - SAFE**

No matter what kind of challenge your application requires, your forklift trucks should not only be reliable, but also offer advantages in terms of productivity and safety, as well as costs. With the CLARK S-Series, we are meeting all your demands perfectly. The series is characterised by a robust ergonomic design and is made for a reliable and powerful operation at low operating and maintenance costs. The S-Series offers you a smart solution for material handling needs that will inspire you. In short, this Series is SMART, STRONG and SAFE.



## A forklift could not be smarter

The S-Series offers many features that are a real benefit for your company. We offer the following solutions:

- >> Highly visible orange seat belt
- >> Automatic neutral position of the driving direction if the belt buckle is not closed
- >> Driving direction change on the mechanical hydraulic lever, on the steering column or, in the case of mini levers, on the armrest
- >> Blue LED warning lights for both driving directions
- >> Speed limiter for programming a fixed maximum speed
- >> Audible, programmable reversing alarms and warnings
- >> Container-compatible overhead guards

■ **SMART** ■



# FORKLIFT TRUCK WITH DIESEL OR LPG DRIVE **S40-55**

**S** SERIES



■ **STRONG** ■

## CLARK Forklifts are “Built to Last”

### **Wet Disc Brake**

- >> For up to 50 % less effort
- >> Maintenance-free
- >> Strong braking effect even in wet or dusty environments

### **High residual load capacity**

- >> Up to 5.5 tonnes with 600 mm load centre
- >> Low centre of gravity
- >> Available with dual tyres that ensure safe transportation of wide loads

### **Robust CLARK mast construction**

- >> Nested mast profiles
- >> 6-roller fork carriage as standard

### **Stable steering axle**

- >> Stable, vibration-free mounted steering axle

### **Transmission shift protection**

- >> Function to reduce the effects of gearshifts when driving fast
- >> Prevents gearshifts (forward/ reverse) at high speeds



## Extensive range of safety features

Numerous safety features underline the quality of the S-Series, as they not only ensure a safe and productive application, but also a low total cost of ownership.

### Automatic parking brake

>> A manual or mechanical activation of the parking brake is not necessary. When leaving the parked forklift, the parking brake is activated automatically

>> When the brake is activated, a driving against the brake is not possible

### Rollback protection

>> Unintentional rolling away or back is prevented.

### CLARK VMS system

>> When the function is activated, the tilt function of the upright stops automatically in vertical position.

### Load weight indication in the display

>> Informs the driver about the current load on the forks

>> Can be combined with other attachments

### Adjustable maximum speeds

>> If needed, the maximum driving speed can be reduced constantly

■ **SAFE** ■



# FORKLIFT TRUCK WITH DIESEL OR LPG DRIVE **S40-55**

**S** SERIES

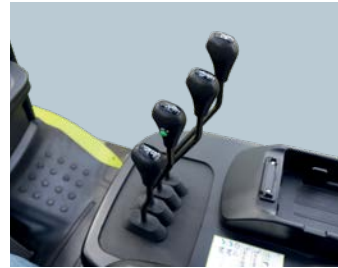
## OPTIONAL EQUIPMENT

To adapt your truck to your individual working conditions the following options are available:



### Driver's seats

The driver's seat is available with either mechanical suspension or air suspension. Different versions with orange safety belt, side safety bars or armrests.



### Easy to handle hydraulic lever

As standard, hood mounted hydraulic levers are offered. With up to five hydraulic functions, the application of various attachments is possible.



### Mini lever with armrest

Ergonomic mini-levers are available to control the hydraulic functions. On request, a drive direction switch can be integrated into the armrest.



### Rear view camera

Increased safety thanks to a wide field of vision and a good mounting position on the back of the driver's cab.



### Air conditioning

For more productivity on hot days. With good cooling performance, dehumidification and integrated cooling and heating function.



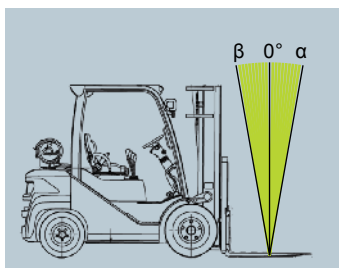
### Storage compartment

Available with 12 volt power connection or USB charging port.



### Blue LED warning lights

The blue LED warning lights provide a visual warning and are available for both driving directions.



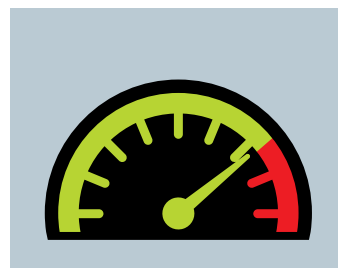
### CLARK VMS System (Vertical Mast System)

By activating this function, the tilting process of the mast stops automatically in the vertical position when tilting forward or backward.



### Load weight indication on the display

Due to a tare function that can be activated by the driver, the load weight indication also works when using different attachments.



### Adjustable maximum speeds

It makes sense to reduce the maximum possible driving speed, especially in areas where there is a lack of visibility or where space is confined. The reduction of the driving speed can be adjusted according to the specific situation.



### Direction switch on the hydraulic lever

By changing the travel direction on the hydraulic lever, the driver is less stressed, as it is not necessary anymore to change the travel direction at the steering column.



## Operator's cabin: From rain protection to a fully featured cab with air conditioning

Various cab types are available for the driver's compartment of the S-Series. To ensure that you get the right solution for your application, the following cabins are offered:

>> Rain protection (roof only)

>> Weather protection (roof and windscreen)

>> Partial cabin (roof, front and rear window)

>> Completely equipped full cabin

With the completely equipped full cab, the two-piece driver's doors can be opened by 180° and fixed to the truck frame. This makes it possible to drive with open doors, for example during the summer. A heated rear window is another standard feature. The easily accessible storage compartments, as well as a Bluetooth radio, completes the features of our full cabins.

For applications in 20-foot standard containers reduced overhead guard heights with container-compatible dimensions are available. Talk to your CLARK representative to find the right solution for you.

### The fully-featured driver's cabs include the following equipment:

- Heating with proportional controllable heating valve
- Two-piece side doors
- Sliding window
- Bluetooth radio with USB connection
- Front and rear wiper
- Heated rear window
- Cup holder
- Storage box
- Note holder



# FORKLIFT TRUCK WITH DIESEL OR LPG DRIVE **S40-55**

**S** SERIES

## Fork Positioners

Our fork positioners increase the efficiency and flexibility of the S-Series.

More handling capacity can be achieved especially when the load widths to be transported are changing frequently.

CLARK fork positioners have a separate sideshift and are available in different frame widths.



## Dual or twin tyres

The S-Series can be equipped with dual tyres on the drive axle to improve traction and stability when cornering.

This is particularly useful when transporting very wide loads. Depending on the condition of the ground, dual tyres can also be advantageous for outdoor use in winter.







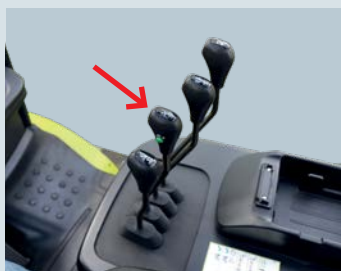
### CLARK VMS System (Vertical Mast System)

By activating this function, the tilting process of the mast stops automatically in the vertical position when tilting forward or backward.

This function can be used with the mechanical hydraulic levers as well as with mini levers.



VMS activation switch  
on the mini lever



VMS activation switch  
on the mechanical  
hydraulic lever



Load capacity:  
max. 5500 kg  
with 600 mm LC



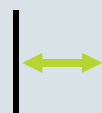
Lifting height:  
max. 7000 mm



Driving speed:  
max. 23,1 km/h Diesel  
max. 18.7 km/h LPG



Power drive motor:  
Diesel: 55.4 kW  
LPG: 63.6 kW



Working aisle width:  
from 4499 mm



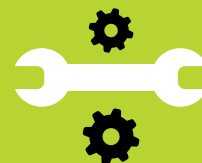
## **FORKLIFT TRUCK WITH DIESEL OR LPG DRIVE**

S40SD / S45SD / S50SD / S50D / S55D  
S40SL / S45SL / S50SL / S50L / S55L



### **GLOBAL PRESENCE**

CLARK products are  
in operation all around  
the world.



### **RELIABLE SPARE PARTS SERVICE**

Over 120,000 items in our  
Duisburg Spare Parts  
Centre in Germany.



### **COMPREHENSIVE DEALER NETWORK**

Over 550 sales & distribution partners in  
more than 90 countries ensure a high level  
of availability of our products and services.



### **EXCELLENT QUALITY**

CLARK is the forerunner in high-  
quality standards and innovative  
product developments.



#### **CLARK EUROPE GmbH**

Dr.-Alfred-Herrhausen-Allee 33

47228 Duisburg / Germany

Tel: +49 (0)2065 499 13-0 · Fax: +49 (0)2065 499 13-290

Info-europe@clarkmheu.com · www.clarkmheu.com

#### **S40-55**

PRINTED IN GERMANY

© 2022 CLARK EUROPE GmbH

S40sD / S45sD / S50sD / S50D / S55D

S40sL / S45sL / S50sL / S50L / S55L