

# Thermicroll Spiral 40



## The Thermicroll Spiral 40 is designed for continual use in both internal and external applications

The curtain profiles are an insulated double skinned aluminium design, complete with thermal breaks for high insulation and acoustic values. The patented design of the spiral heading and guide sections allow for a smooth, quiet and fast operation. The curtain profile rolls up in the heading spiral contact free so greatly reduces wear.

Emergency opening is achieved by the counter weight system built into the column, along with the direct drive and 3 phase inverter controls, the operating speeds are fast and smooth.

### Features & Benefits

- 3ph motor with inverter drive controls
- Up to 1.8 m/s opening speed
- User friendly with minimal maintenance
- Quiet high speed operation
- Resistive wireless safety edge
- Low level photocell
- Light grid (optional)
- Helps to reduce heat loss
- Thermal performance 1.8 W/m<sup>2</sup>K
- Simple opening if power fails



## Technical and Operating Specifications

<b>Application</b>	Internal	Standard
	External	Standard
<b>Speed</b>	Maximum Opening Speed	1.8 m/s
	Maximum Closing Speed	0.8 m/s
<b>Door Sizes</b>	Maximum Width	6000mm
	Maximum Height	5000mm
<b>Space Requirements for Fitting</b>	Motor Side	350mm
	Non Motor Side	350mm
	Head Room Depending on size	650mm / 1000mm
<b>Wind Class</b>	4000 x 4000	Class 3
	5000 x 5000	Class 2
	6000 x 5000	Class 1
<b>Curtain Material</b>	42mm Insulated Aluminium	Standard
	Painted steel	Optional
<b>Curtain Colours</b>	Self Colour	Standard
<b>Control Panel</b>	Inverter controls in a Steel case	Standard
<b>Control Panel Dimensions</b>	300w x 400h x 150d	Standard
<b>Operating Temperature</b>	-30°C - +40°C	Heating kits optional extra
<b>Door Frame Construction</b>	Galvanised Steel	Standard
<b>Guide Material</b>	Self Lubricating Polyethylene	Standard
<b>Power Supply</b>	3 Phase Neutral and Earth 400v	16 Amp slow acting fuse
<b>Supply Cable</b>	Correct size to avoid power lose	As per Electrical Regulations
<b>Column Covers</b>	Galvanised	Standard
<b>Barrel Cover</b>	Galvanised	Optional
<b>Motor Position</b>	Within the column	Standard
<b>Safety Edge</b>	Wireless Resistive Style	Standard
<b>Photocell</b>	Transmitter / Receiver Type	Standard
<b>Vision Panels</b>	Various options	Optional
<b>Timed Close</b>	Selected on Installation	0 – 200 secs
<b>Limits</b>	Digital Encoder	Standard
<b>Emergency Opening</b>	Counter Weight	Standard

### Optional Extras

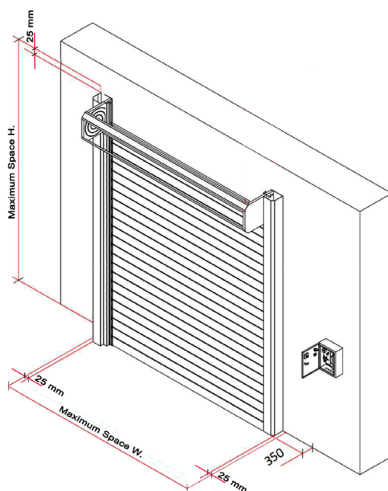
Various Vision Panel Designs	Pull Cord and Gallows	Key Switch
Perforated Lath	Stainless Steel Frame	Powder Coated Frame
Remote Control	Induction Loop Detectors	Digital Keypad
Radars	Flashing Light	
Proximity Sensors	Traffic Lights	
Light Grid	Heating Kits to Guides and Motors	

### Standards and Conformity

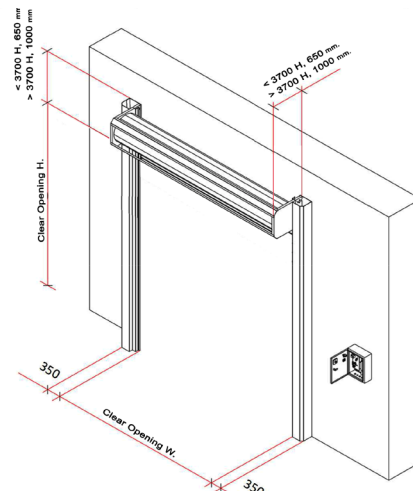
<b>Mechanical Compliance</b>	BS EN12604	
<b>Resistance against Wind Pressure</b>	DIN EN 12424 - 44	Class 3
<b>Air Permeability</b>	EN 12426 – 7	Class 0
<b>Thermal Performance</b>	EN 12428	1.8 W/m <sup>2</sup> K
<b>Resistance to Water Penetration</b>	EN12425 - 489	Class 3
<b>Compliant to European Standard</b>	EN13241	

## Technical Drawings

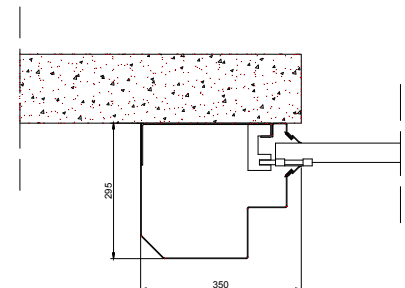
Reveal Fit Application



Face Fit Application



Column



Distributor Details

