

GAMMA 800 12V

GAMMA 800 12V is the electric lifting table in which lifting is obtained by means of an electro/hydraulic control unit fed by a 12 V battery; with a capacity of 800 Kg and lifting of up to 1475 mm,

it is the ideal equipment for the service to machine tools and operators.



ADVANTAGES

MOTOR-DRIVEN LIFTING AND MANUAL TRANSLATION:

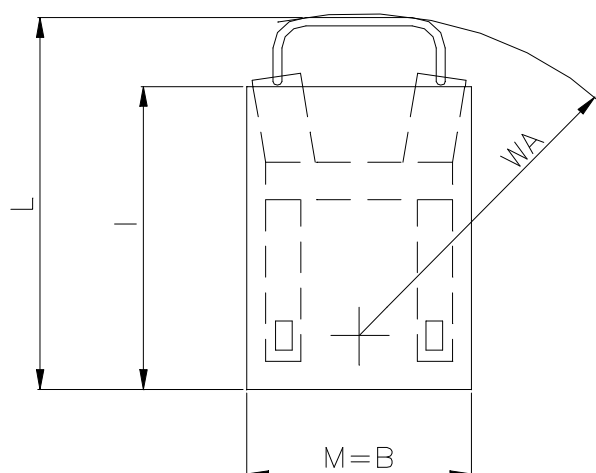
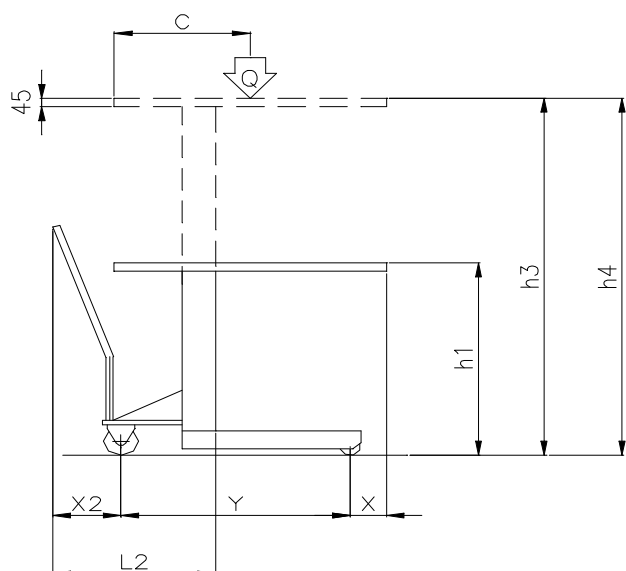
Motor-driven lifting through electro-hydraulic control unit fed by battery; thanks to the built-in battery charger, it is also possible to recharge it directly where it is being used. Finally, with the comfortable push handle, it is possible to manually move the load in a safe and accurate way.

REDUCED DIMENSIONS:

Thanks to the lifting system with piston in vertical position, without pantograph structure, it is possible to contain the dimensions.

STANDARD EQUIPMENT

- ▶ 12V 10A electronic battery charger with microprocessor.
- ▶ 12V 100Ah battery.
- ▶ Manual traction.
- ▶ Emergency button.
- ▶ Lifting by lever control.
- ▶ Protection fuse.
- ▶ Parking brake.
- ▶ Chromed oleodynamic piston.
- ▶ Polyamide wheels with polyurethane covering.



Technical sheet GAMMA 800 12 V

Specifications	Producer	Armanni	
	Models	Gamma 800 12v	
	Capacity	Q (Kg)	800
	Traction	Manual	
	Driving	/	
	Weight	Kg	152
	Wheels front/rear	solid/solid	
Dimension	Lifting	h3(mm)	1475
	Length	L(mm)	980
	Length	L2(mm)	620
	Width	B (mm)	750
	Closed mast height	h1 (mm)	700
	Opened mast height	h4 (mm)	1475
	Turning radius	Wa (mm)	925
	Distance of the loading	X (mm)	90
	Storage corridor*	mm	/
	Distance between axles	y (mm)	700
Performances	Lifting motor	Kw	0.8
	Brakes	Manual	
	Battery	Ah	100 12V
	Weight	Kg	25
	Battery charger	12 V	10A

* Excluding the area of safety for operator