

# HMF 5020K-RCS

The HMF 5020K-RCS has a low tare weight, which, combined with the minimum space requirements, gives optimum vehicle payload.



## Main benefits

- Suitable for a wide range of tasks
- Strength and operational safety
- Great flexibility and smooth operation for demanding tasks

## Precise crane with smooth operation and heavy lifting

The HMF 5020K-RCS is a strong crane available with a wide variety of options.

The crane has a dual Power Plus link arm system, which ensures an excellent lifting capacity and makes it possible both to lift heavy loads close to the column and also lift bulky items at long reach and in high positions.

The service-friendly design of the crane also contributes to easy maintenance and low costs of ownership. The crane is furthermore equipped with internal hose routing, which not only ensures a clean design, but also protects the crane from wear and tear.

Additionally, the crane can be delivered with HMF's load-dependent EVS system monitoring and ensuring stability.

## Why choose the 5020K?

- With a reach of more than 21 m, the crane is suitable for a wide range of tasks.
- The dual link arm system makes it possible to manage heavy lifting close to the column as well as at a long distance and in high positions.

PERFORMANCE	5020-K2	5020-K3	5020-K4	5020-K5	5020-K6	5020-K7	5020-K8
Load Moment (tm)	47,7	46,2	45,9	44,7	43,6	43,4	42,4
Hydraulic reach (m)	8,25	10,25	12,5	14,5	16,75	19,1	21,45
Weight excl. stabilizers (Kg)	3610	3900	4170	4420	4620	4800	4975
Weight of stabilizers, standard (Kg)	500	500	500	500	500	500	500
Lift-to-weight ratio	11,6	10,5	9,8	9,1	8,5	8,2	7,7
Slewing Angle (°)	∞	∞	∞	∞	∞	∞	∞
Slewing torque (kgm)	5000	5000	5000	5000	5000	5000	5000
Working pressure (bar)	365	365	365	365	365	365	365
GEOMETRY							
Height above mounting surface (mm)	2398	2398	2398	2398	2398	2438	2438
Width, folded, standard (mm)	2519	2519	2519	2519	2519	2519	2519
Length of crane, no extra valves (mm)	1198	1198	1198	1198	1198	1298	1298

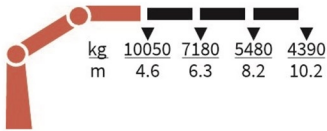
# Lifting Capacity



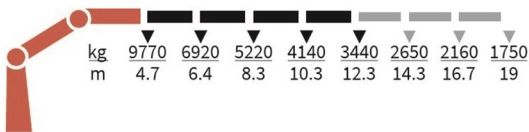
5020-K2-RCS



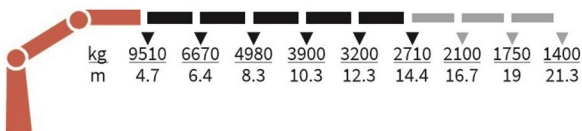
5020-K3-RCS



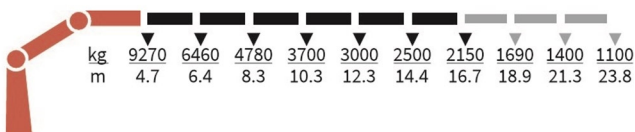
5020-K4-RCS



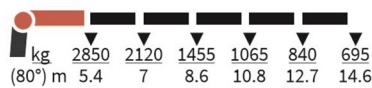
5020-K5-RCS



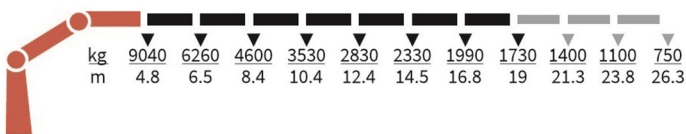
5020-K6-RCS



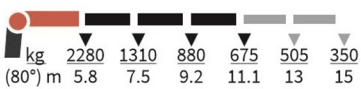
FJ1000-K5



5020-K7-RCS



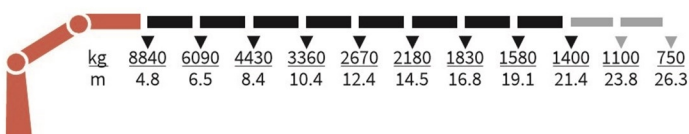
FJ600-K3



FJ600-K4



5020-K8-RCS



# Basics and options

## Basics

HMF 5020K-RCS

Electronic speed adaptation, HDL-d
Progressive crane control
Priority flow control
Dual Power plus link arm system
Proportional control valve PVG 32
Radio remote control of stabilizer beams and stabilizer legs on crane
Internal hose routing
Environmentally friendly quality coating
RCL safety system

## Options

<b>Control stations</b>
Personnel basket on crane – MEWP
<b>Control systems</b>
Radio remote control Maxi
Radio remote control Mini
Radio remote control with Power display
Extra digital outputs
<b>Electrical options</b>
Spotlight
Voltage
<b>Extra valves</b>
Extra valves in hose guides
Extra valves in hose reels, internally led
Extra valves in hose reels, externally led
Multi-coupling
<b>Fly-jib</b>
Fly-jib 600
Fly-jib 1000
Personnel basket on Fly-jib
<b>Hydraulic hoist</b>
Full hoist preparation
Hydraulic hoist 3200
2-part snatch block
<b>Hydraulics</b>
Ball valve for tank
Oil cooler, medium
Oil cooler, large
1 radio remote controlled available proportional function
3rd extra valve
Biodegradable oil
Oil tank 250 l mounted on the crane
Temperature monitoring
<b>Mechanical options</b>
Manual extension
Shielding of load-holding valve
Protective guard at the rear of the jib
Mounting bolt kit
Fittings for mounting bolt kits
<b>Stability and safety</b>
Electronic vehicle stability - EVS

AutoSwitch
Cylinder limitation
2-section Cylinder and beam limitation
2CYBEL-I
Limitation of working area – horizontal
Cabin anti-crash
2-stage load moment limitation
Preparation for alternative stability system
Alarm flash on stabilizer legs
Calibration bypass
Light tower
Beam and height warning
Stabilizer leg warning
<b>Stabilizer beams and legs</b>
Hydraulic swing-up stabilizer legs
Manual swing-up stabilizer legs
Fixed vertical stabilizer legs
Footplate with ball joint
Footplate extended
Hydraulic stabilizer beams 5.6 m - 7.8 m
<b>Colours</b>
RAL colors