

HMF 2810K-RCS

The HMF 2810K-RCS is a strong and precise crane with many options.



Main benefits

- Excellent lift-to-weight ratio
- Very large stabilizer spread
- Automatic load-dependent stability system

Versatile crane with low tare weight

The HMF 2810K-RCS is one of our most popular cranes. It comes with a wide range of options as well as economic benefits for you.

The low tare weight and reduced space requirements of the crane provide for full utilization of the truck body and lower fuel consumption, which means cost savings.

The design is service-friendly which makes maintenance easy, and the clean design with internal hose routing leaves fewer parts exposed, thus protecting them from external damage. All to ensure you low costs of ownership.

Additionally, the crane is supplied with a user-friendly HDL speed adaptation system, which gives the operator the possibility of thoroughly controlling the crane movements and at the same time the lifting capacity is increased.

Why choose a 2810K?

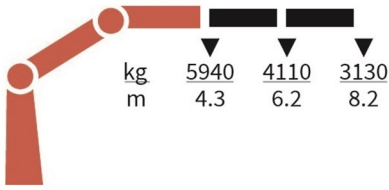
- A versatile crane with high manoeuvrability.
- With a reach up to 23 m, the crane is suitable for demanding lifting tasks on a long distance.
- Two link arms ensure strength, stability, and speed in all boom positions.

PERFORMANCE	2810-K2	2810-K3	2810-K4	2810-K5	2810-K6	2810-K7	2810-K8
Load Moment (tm)	25,7	25,2	24,6	24,2	23,8	23,4	23
Hydraulic reach (m)	8,3	10,3	12,5	14,8	17,1	19,3	21,6
Weight excl. stabilizers (Kg)	1895	2065	2265	2415	2555	2660	2745
Weight of stabilizers, standard (Kg)	290	290	290	290	290	290	290
Lift-to-weight ratio	11,8	10,7	9,6	8,9	8,4	7,9	7,6
Slewing Angle (°)	400	400	400	400	400	400	400
Slewing torque (kgm)	2763	2763	2763	2763	2763	2763	2763
Working pressure (bar)	365	365	365	365	365	365	365
GEOMETRY							
Height above mounting surface (mm)	2295	2295	2295	2295	2295	2295	2335
Width, folded, standard (mm)	2500	2500	2500	2500	2500	2500	2500
Length of crane, no extra valves (mm)	885	885	885	885	885	995	995

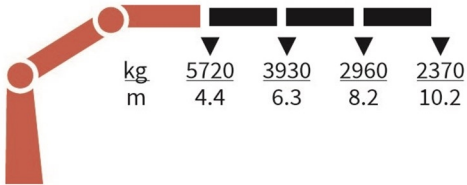
Lifting Capacity



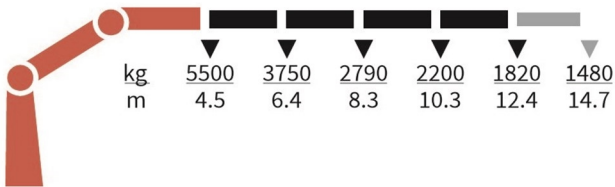
2810-K2-RCS



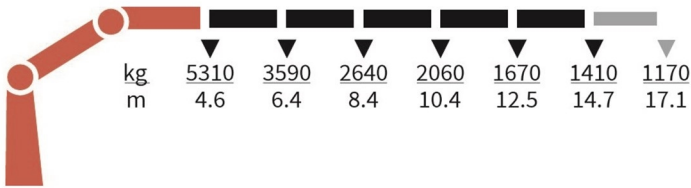
2810-K3-RCS



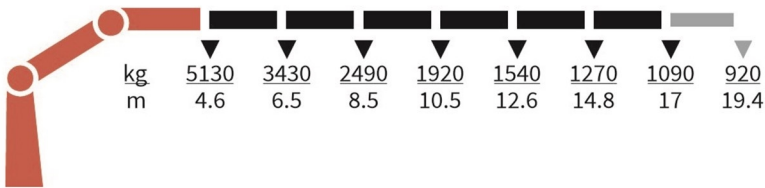
2810-K4-RCS



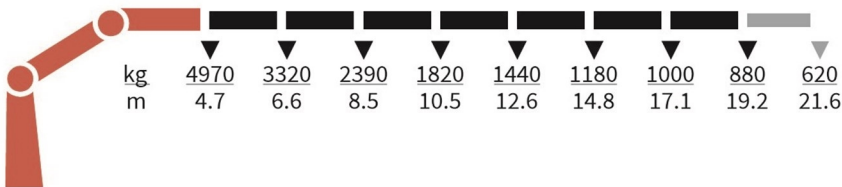
2810-K5-RCS



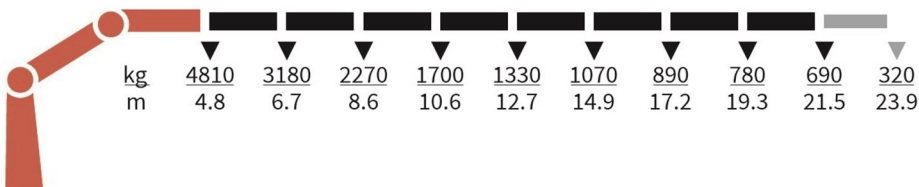
2810-K6-RCS



2810-K7-RCS



2810-K8-RCS



Basics and options

Basics

HMF 2810K-RCS

Electronic speed adaptation, HDL-d
Slew braking control
Progressive crane control
Priority flow control
Single power plus link arm system
Proportional control valve PVG 32
Internal hose routing
Environmentally friendly quality coating
RCL safety system

Options

Control stations
Top seat RC
Heated seat
High stand flexible
Control systems
Radio remote control Maxi
Radio remote control Mini
Radio remote control with Power display
Extra digital outputs
Electrical options
Spotlight
Voltage
Extra valves
Extra valves in hose guides
Extra valves in hose guides, raised
Extra valves in hose reels, internally led
Extra valves in hose reels, externally led
Multi-coupling
Hydraulic hoist
Full hoist preparation
Hydraulic hoist 1500
Hydraulic hoist 2500
2-part snatch block
Hydraulics
Ball valve for tank
Oil cooler, medium
Oil cooler, large
4 manually controlled available stabilizer functions
2 manually controlled available stabilizer functions
1-4 available radio remote-controlled functions
Hydraulic functions for separate traverse
3rd extra valve
Biodegradable oil
Oil tank 150 l mounted on the crane
Oil tank 90 l mounted on the crane
Radio remote control of stabilizer beams and stabilizer legs on crane
Temperature monitoring
Mechanical options
Manual extension
Hook for manual extension
Crane orientation

Shielding of load-holding valve
Shielding of jib cylinder
Mounting bolt kit
Fittings for mounting bolt kits
Stability and safety
Electronic vehicle stability - EVS
AutoSwitch
Cylinder limitation
2-section Cylinder and beam limitation
2CYBEL-I
Limitation of working area – horizontal
Cabin anti-crash
2-stage load moment limitation
Preparation for alternative stability system
Stabilizer duty control
Alarm flash on stabilizer legs
Calibration bypass
Light tower
High stand safety system - quadrant
Quadrant operator protection system
Beam and height warning
Beam and park warning
Stabilizer leg warning
Stabilizer beams and legs
Hydraulic stabilizer beams 5.6 m - 7.4 m
Hydraulic swing-up stabilizer legs
Manual swing-up stabilizer legs with gas spring
Manual swing-up stabilizer legs
Fixed vertical stabilizer legs
Fixed vertical stabilizer legs, long
Footplate with ball joint
Footplate extended
Manual stabilizer beams 5.6 m
Colours
RAL colors