

HMF 1330K-RCS

The HMF 1330K-RCS is a strong crane with an excellent lift-to-weight ratio.



Main benefits

- Radio remote control system for total freedom
- Wear-resistant
- Safe and functional

A versatile and flexible crane

The HMF 1330K-RCS is developed and designed to solve many different lifting tasks. Advanced methods of calculation have been used for designing the crane's components and geometry, to ensure that this crane offers a lift-to-weight ratio amongst the best on the market.

The crane is available with up to 6 hydraulic extensions and an over-bending of 15° between the main boom and the jib providing great flexibility for demanding tasks in narrow places, e.g. through low gates and windows.

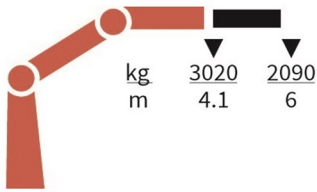
Additionally, the crane can be delivered with HMF's load-dependent EVS system monitoring and ensuring stability.

| PERFORMANCE | 1330-K1 | 1330-K2 | 1330-K3 | 1330-K4 | 1330-K5 |
|---------------------------------------|---------|---------|---------|---------|---------|
| Load Moment (tm) | 12,4 | 12,1 | 11,7 | 11,4 | 11,2 |
| Hydraulic reach (m) | 6,1 | 8,2 | 10,5 | 12,7 | 15 |
| Weight excl. stabilizers (Kg) | 1080 | 1205 | 1315 | 1410 | 1495 |
| Weight of stabilizers, standard (Kg) | 170 | 170 | 170 | 170 | 170 |
| Lift-to-weight ratio | 9,9 | 8,8 | 7,9 | 7,2 | 6,7 |
| Slewing Angle (°) | 420 | 420 | 420 | 420 | 420 |
| Slewing torque (kgm) | 1325 | 1325 | 1325 | 1325 | 1325 |
| Working pressure (bar) | 345 | 345 | 345 | 345 | 345 |
| GEOMETRY | | | | | |
| Height above mounting surface (mm) | 2135 | 2135 | 2135 | 2135 | 2135 |
| Width, folded, standard (mm) | 2500 | 2500 | 2500 | 2500 | 2500 |
| Length of crane, no extra valves (mm) | 747 | 747 | 747 | 747 | 747 |

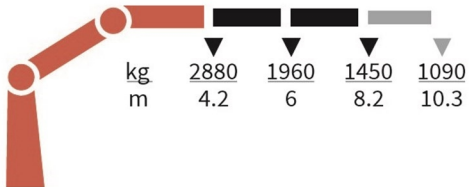
Lifting Capacity



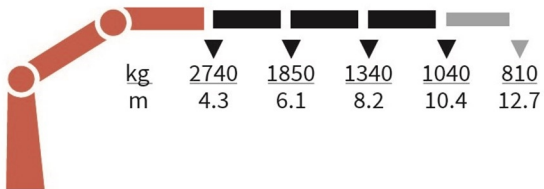
1330-K1-RCS



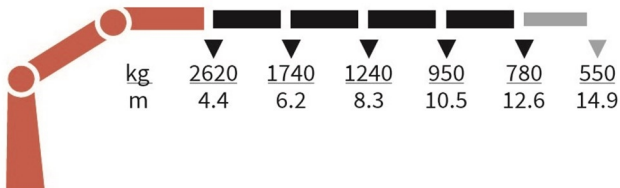
1330-K2-RCS



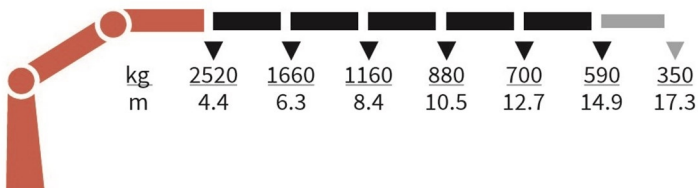
1330-K3-RCS



1330-K4-RCS



1330-K5-RCS



Basics and options

Basics

HMF 1330K-RCS

| |
|--|
| Electronic speed adaptation, HDL-d |
| Progressive crane control |
| Priority flow control |
| Single power plus link arm system |
| Proportional control valve PVG 32 |
| Internal hose routing |
| Environmentally friendly quality coating |
| RCL safety system |

Options

| |
|---|
| Control stations |
| High stand RC |
| Top seat RC |
| Heated seat |
| Control systems |
| Radio remote control Maxi |
| Radio remote control Mini |
| Radio remote control with Power display |
| Extra digital outputs |
| Electrical options |
| Spotlight |
| Voltage |
| Extra valves |
| Extra valves in hose guides |
| Extra valves in hose reels, internally led |
| Multi-coupling |
| Hydraulic hoist |
| Hydraulic hoist 1500 |
| 2-part snatch block |
| Hydraulics |
| 4 manually controlled available stabilizer functions |
| 2 manually controlled available stabilizer functions |
| 1-4 available radio remote-controlled functions |
| Biodegradable oil |
| Ball valve for tank |
| Oil cooler, medium |
| Oil tank 65 l mounted on the crane |
| Radio remote control of stabilizer beams and stabilizer legs on crane |
| Temperature monitoring |
| Mechanical options |
| Manual extension |
| Hook for manual extension |
| Crane orientation |
| Mounting bolt kit |
| Fittings for mounting bolt kits |
| Stability and safety |
| Electronic vehicle stability - EVS |
| AutoSwitch |
| Cylinder limitation |
| 2-section Cylinder and beam limitation |
| Limitation of working area – horizontal |
| Cabin anti-crash |

| |
|---|
| 2-stage load moment limitation |
| Preparation for alternative stability system |
| Stabilizer duty control |
| Alarm flash on stabilizer legs |
| Calibration bypass |
| Light tower |
| High stand safety system - basic |
| High stand safety system - envelope |
| High stand safety system - quadrant |
| Quadrant operator protection system |
| Beam and height warning |
| Beam and park warning |
| Stabilizer leg warning |
| Stabilizer beams and legs |
| Manual swing-up stabilizer legs with gas spring |
| Manual swing-up stabilizer legs |
| Fixed vertical stabilizer legs |
| Footplate with ball joint |
| Footplate extended |
| Hydraulic stabilizer beams 4.6 m - 5.6 m |
| Fixed vertical stabilizer legs, short |
| Manual stabilizer beams 4.6 m - 5.6 m |
| Colours |
| RAL colors |