

HMF 1800K-HS10

The HMF 1800K-HS10 is a safe crane with increased overview of the movements.



Main benefits

- User-friendly
- High manoeuvrability
- Safe and functional

A safe crane for loading and unloading with grab

The HMF 1800K-HS10 is a crane where the control position and control valve are placed on the stand-up platform. The crane operator operates the crane standing on the platform.

With stand-up control, the crane operator has an increased overview of the crane movements. Especially when loading and unloading the platform body with e.g. grab or pallet fork, the crane operator has the full view of both the platform body and the working area.

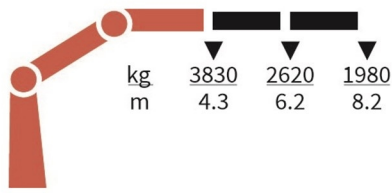
On the platform, the crane operator is protected by an HSL safety system that creates a virtual safety “cage” around him.

PERFORMANCE	1800-K2	1800-K3	1800-K4	1800-K5	1800-K6	1800-K7	1800-K8
Load Moment (tm)	16,6	16,1	15,6	15,2	14,7	14,3	14
Hydraulic reach (m)	8,3	10,3	12,5	14,8	17,1	19,3	21,6
Weight excl. stabilizers (Kg)	1840	1995	2180	2320	2445	2550	2635
Weight of stabilizers, standard (Kg)	275	275	275	275	275	275	275
Lift-to-weight ratio	7,8	7,1	6,4	5,9	5,4	5,1	4,8
Slewing Angle (°)	400	400	400	400	400	400	400
Slewing torque (kgm)	2426	2426	2426	2426	2426	2426	2426
Working pressure (bar)	300	300	300	300	300	300	300
GEOMETRY							
Height above mounting surface (mm)	2295	2295	2295	2295	2295	2295	2335
Width, folded, standard (mm)	2500	2500	2500	2500	2500	2500	2500
Length of crane, no extra valves (mm)	885	885	885	885	885	995	995

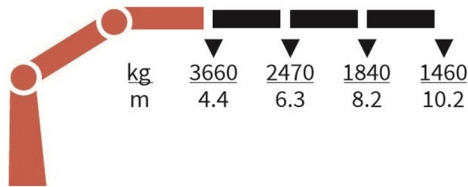
Lifting Capacity



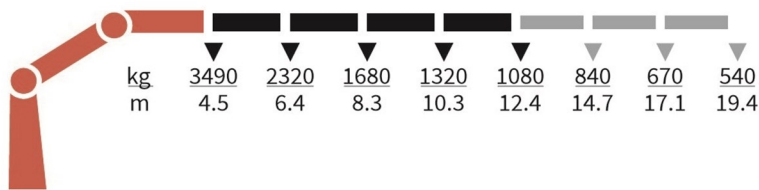
1800-K2-HS10-MC



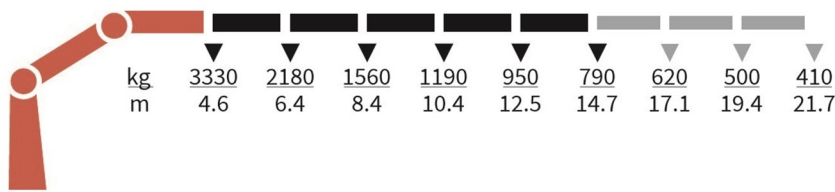
1800-K3-HS10-MC



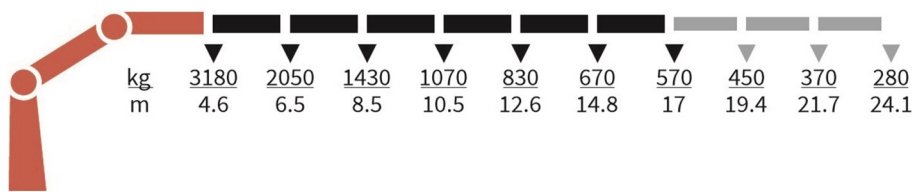
1800-K4-HS10-MC



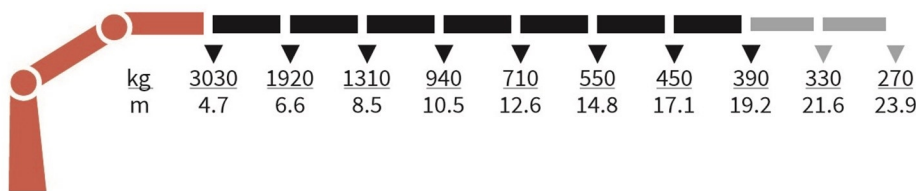
1800-K5-HS10-MC



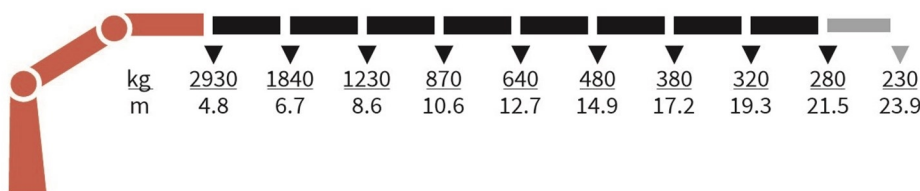
1800-K6-HS10-MC



1800-K7-HS10-MC



1800-K8-HS10-MC



Basics and options

HMF 1800K-HS10

Basics

Dual Power plus link arm system
Internal hose routing
High stand 10
Environmentally friendly quality coating
RCL safety system

Options

Electrical options
Spotlight
Voltage
Extra valves
Extra valves in hose guides
Extra valves in hose reels, internally led
Extra valves in hose reels, externally led
Multi-coupling
Hydraulics
Oil cooler, medium
4 manually controlled available stabilizer functions
2 manually controlled available stabilizer functions
Biodegradable oil
High-pressure filter
Oil tank 90 l mounted on the crane
Temperature monitoring
Mechanical options
Manual extension
Crane orientation
Shielding of load-holding valve
Shielding of jib cylinder
Mounting bolt kit
Fittings for mounting bolt kits
Dual control
Stabilizer operation from high stand
Stability and safety
Electronic vehicle stability for MCS cranes
Cylinder limitation
Cylinder and beam limitation
2-section Cylinder and beam limitation
2-stage load moment limitation
Preparation for alternative stability system
Alarm flash on stabilizer legs
Calibration bypass
High stand safety system - basic
High stand safety system - quadrant
Beam and height warning
Beam and park warning
Stabilizer leg warning
Stabilizer beams and legs
Hydraulic swing-up stabilizer legs
Manual swing-up stabilizer legs with gas spring
Manual swing-up stabilizer legs
Fixed vertical stabilizer legs
Fixed vertical stabilizer legs, long

Footplate with ball joint
Footplate extended
Hydraulic stabilizer beams 5.6 m - 6.5 m
Manual stabilizer beams 5.6 m
Colours
RAL colors