

# HMF 9520OK-RCS

The HMF 9520OK-RCS will give you the optimum lifting capacity with stable operation and high speed.



## Main benefits

- Suited for a wide range of tasks from heavy lifting to assembly work
- OK boom system for maximum reach and utilization of the truck body
- Great flexibility and smooth operation for demanding tasks

## A crane for particularly demanding lifting tasks and assembly work

The 9520OK-RCS is our strongest crane and comes with a wide range of options, so it can be fitted to your needs.

The O in OK, stands for Optimized. This means that with the 9520OK, you get optimized reach as well as optimized space on the truck body. This equals low cost of ownership as low tare weight and reduced dimensions provide for low fuel costings as well as maximum utilization of your truck.

The crane is furthermore designed with internal hose routing and in a service-friendly manner to minimise external damage and ensure a long lifespan.

## Why choose the 9520OK?

- The best space saving dimensions in its category.
- Precise and user-friendly operation makes the crane operational under difficult conditions.

PERFORMANCE	9520-OK2	9520-OK3	9520-OK4	9520-OK5	9520-OK6
Load Moment (tm)	80,1	79,1	77,9	77,1	76
Hydraulic reach (m)	8,3	10,34	12,4	14,64	16,94
Weight excl. stabilizers (Kg)	5670	6020	6360	6665	6930
Weight of stabilizers, standard (Kg)	1025	1025	1025	1025	1025
Lift-to-weight ratio	12	11,2	10,5	10	9,6
Slewing Angle (°)	∞	∞	∞	∞	∞
Slewing torque (kgm)	8163	8163	8163	8163	8163
Working pressure (bar)	365	365	365	365	365
GEOMETRY					
Height above mounting surface (mm)	2500	2500	2500	2500	2510
Width, folded, standard (mm)	2550	2550	2550	2550	2550
Length of crane, no extra valves (mm)	1440	1440	1440	1440	1440

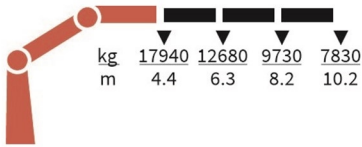
# Lifting Capacity



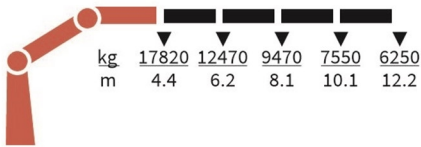
9520-OK2-RCS



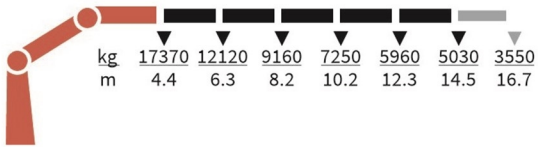
9520-OK3-RCS



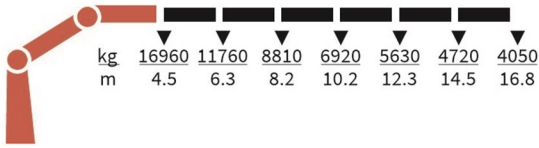
9520-OK4-RCS



9520-OK5-RCS



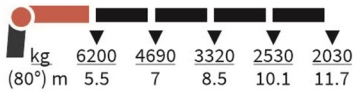
9520-OK6-RCS



FJ2000-K3



FJ2000-K4



FJ2000-K5



FJ2000-K6



# Basics and options

## Basics

HMF 95200K-RCS

Electronic speed adaptation, HDL-d
Progressive crane control
Priority flow control
Dual Power plus link arm system
Two slewing gears
Proportional control valve PVG 32
Radio remote control of stabilizer beams and stabilizer legs on crane
Internal hose routing
Environmentally friendly quality coating
RCL safety system

## Options

<b>Control systems</b>
Radio remote control Maxi
Radio remote control with Power display
Extra digital outputs
<b>Electrical options</b>
Spotlight
Voltage
<b>Extra valves</b>
Extra valves in hose guides
Extra valves in hose reels, externally led
Multi-coupling
<b>Fly-jib</b>
Fly-jib 2000
Personnel basket on Fly-jib
<b>Hydraulic hoist</b>
Hydraulic hoist 3200
2-part snatch block
<b>Hydraulics</b>
Oil cooler, large
1 radio remote controlled available proportional function
Hydraulic functions for separate traverse
Biodegradable oil
Available hydraulic functions, crane mode
Available hydraulic functions, stabilizer mode
Ball valve for tank
Oil tank 320 l mounted on the crane
Oil tank 390 l mounted on the crane
Prepared for front stabilizer
Temperature monitoring
<b>Mechanical options</b>
Manual extension
Protective guard at the rear of the jib
Mounting bolt kit
Fittings for mounting bolt kits
<b>Stability and safety</b>
Electronic vehicle stability - EVS
AutoSwitch
Cylinder limitation
2-section Cylinder and beam limitation

2CYBEL-I
Limitation of working area – horizontal
Cabin anti-crash
Preparation for alternative stability system
Alarm flash on stabilizer legs
Calibration bypass
Light tower
Beam and park warning
Stabilizer leg warning
<b>Stabilizer beams and legs</b>
Hydraulic stabilizer beams 8.4 m
Hydraulic swing-up stabilizer legs
Manual swing-up stabilizer legs
Footplate with ball joint
<b>Colours</b>
RAL colors