

# HMF 910K-RCS

The HMF 910K-RCS is a reliable and sturdy crane with high lifting capacity and full speed in the entire working area.



## Main benefits

- Wear-resistant
- High lift-to-weight ratio
- Radio remote control system for total freedom

## A fast crane with an excellent lifting capacity

The HMF 910K-RCS is a radio remote controlled crane, which works with full speed in the entire working area. It is a versatile crane which can be used for a wide range of different tasks.

The crane is designed in a compact way, which offers good utilisation of the truck body and ultimately means lower cost of ownership.

The crane is equipped with a 15° over-bending which ensures maximum lifting capacity in the entire working area.

| PERFORMANCE                           | 910-K1 | 910-K2 | 910-K3 | 910-K4 |
|---------------------------------------|--------|--------|--------|--------|
| Load Moment (tm)                      | 8      | 7,7    | 7,6    | 7,3    |
| Hydraulic reach (m)                   | 5,3    | 7,3    | 9,1    | 11     |
| Weight excl. stabilizers (Kg)         | 665    | 740    | 810    | 870    |
| Weight of stabilizers, standard (Kg)  | 115    | 115    | 115    | 115    |
| Lift-to-weight ratio                  | 10,2   | 9      | 8,2    | 7,4    |
| Slewing Angle (°)                     | 400    | 400    | 400    | 400    |
| Slewing torque (kgm)                  | 840    | 840    | 840    | 840    |
| Working pressure (bar)                | 335    | 335    | 335    | 335    |
| GEOMETRY                              |        |        |        |        |
| Height above mounting surface (mm)    | 1910   | 1910   | 1910   | 1910   |
| Width, folded, standard (mm)          | 2220   | 2220   | 2220   | 2220   |
| Length of crane, no extra valves (mm) | 664    | 664    | 664    | 664    |

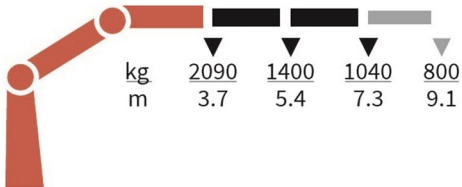
# Lifting Capacity



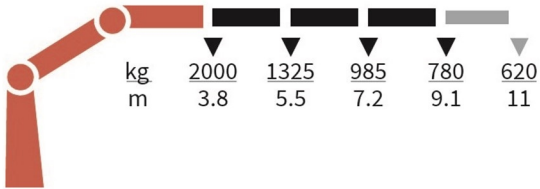
910-K1-RCS



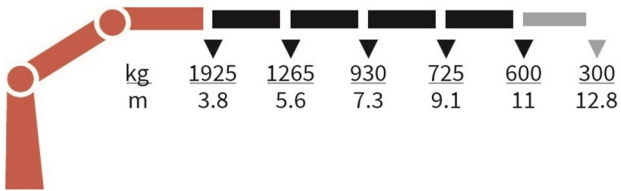
910-K2-RCS



910-K3-RCS



910-K4-RCS



# Basics and options

## Basics

HMF 910K-RCS

|  |
|--|
| Electronic speed adaptation, HDL-d       |
| Progressive crane control                |
| Priority flow control                    |
| Single power plus link arm system        |
| Proportional control valve PVG 32        |
| Internal hose routing                    |
| Environmentally friendly quality coating |
| RCL safety system                        |

## Options

|   |
|---|
| <b>Control systems</b>  |
| Radio remote control Maxi   |
| Radio remote control Mini   |
| Radio remote control with Power display                               |
| Extra digital outputs   |
| <b>Electrical options</b>   |
| Spotlight   |
| Voltage   |
| <b>Extra valves</b>   |
| Extra valves in hose guides   |
| Extra valves in hose reels, internally led                            |
| <b>Hydraulic hoist</b>  |
| Hydraulic hoist 1000  |
| <b>Hydraulics</b>   |
| Ball valve for tank   |
| Oil cooler, small   |
| 2 manually controlled available stabilizer functions                  |
| Biodegradable oil   |
| Oil tank 50 l mounted on the crane                                    |
| Radio remote control of stabilizer beams and stabilizer legs on crane |
| Temperature monitoring  |
| <b>Mechanical options</b>   |
| Manual extension  |
| Hook for manual extension   |
| Crane orientation   |
| Mounting bolt kit   |
| Fittings for mounting bolt kits                                       |
| <b>Stability and safety</b>   |
| Electronic vehicle stability - EVS                                    |
| AutoSwitch  |
| Cylinder limitation   |
| 2-section Cylinder and beam limitation                                |
| 2CYBEL-I  |
| Cabin anti-crash  |
| 2-stage load moment limitation  |
| Preparation for alternative stability system                          |
| Stabilizer duty control   |
| Alarm flash on stabilizer legs  |
| Calibration bypass  |
| Light tower   |
| Beam and height warning   |
| Stabilizer leg warning  |

|   |
|---|
| <b>Stabilizer beams and legs</b>                |
| Manual swing-up stabilizer legs with gas spring |
| Manual swing-up stabilizer legs                 |
| Fixed vertical stabilizer legs                  |
| Fixed vertical stabilizer legs, long            |
| Footplate with ball joint                       |
| Footplate extended                              |
| Manual stabilizer beams 3.4 m - 5.2 m           |
| Manual swing-up stabilizer legs, long           |
| Hydraulic stabilizer beams 4.4 m - 5.2 m        |
| <b>Colours</b>                                  |
| RAL colors                                      |