

HMF 1910K-RCS

The HMF 1910K-RCS is a versatile crane with many options, that can be suited to fit your specific crane needs.



Main benefits

- Excellent lift-to-weight ratio
- Intuitive operation thanks to assistance systems
- Automatic load-dependent stability system

Crane with high lifting capacity and low tare weight

The HMF 1910K-RCS is developed and designed to solve many different lifting tasks. The crane's low tare weight and reduced space requirements moreover provide for a low cost of ownership. This is due to maximal loading capacity on the truck body as well as savings on fuel.

The crane is furthermore designed in a service-friendly manner, which provides for savings on service, maintenance and for a long lifespan of your crane.

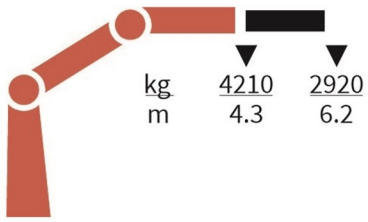
Additionally, this crane can be delivered with HMF's load-dependent EVS system monitoring and ensuring stability.

PERFORMANCE	1910-K1	1910-K2	1910-K3	1910-K4	1910-K5	1910-K6
Load Moment (tm)	18,2	17,6	17,2	16,8	16,4	16,1
Hydraulic reach (m)	6,3	8,4	10,5	12,8	15	17,3
Weight excl. stabilizers (Kg)	1370	1510	1650	1785	1905	2000
Weight of stabilizers, standard (Kg)	200	200	200	200	200	200
Lift-to-weight ratio	11,6	10,3	9,3	8,5	7,8	7,3
Slewing Angle (°)	400	400	400	400	400	400
Slewing torque (kgm)	1795	1795	1795	1795	1795	1795
Working pressure (bar)	365	365	365	365	365	365
GEOMETRY						
Height above mounting surface (mm)	2250	2250	2250	2250	2250	2250
Width, folded, standard (mm)	2500	2500	2500	2500	2500	2500
Length of crane, no extra valves (mm)	830	830	830	830	830	830

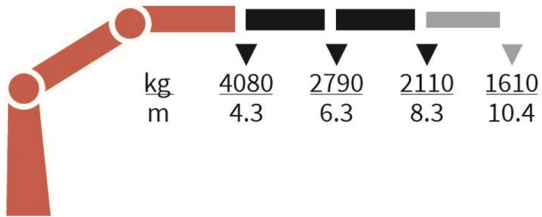
Lifting Capacity



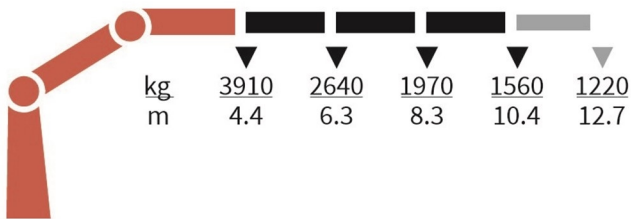
1910-K1-RCS



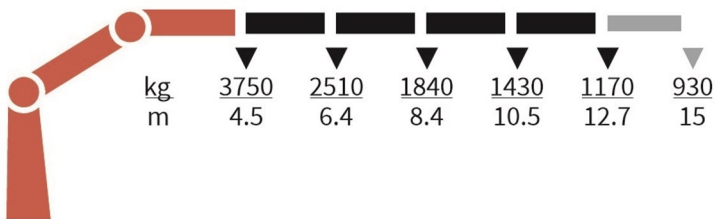
1910-K2-RCS



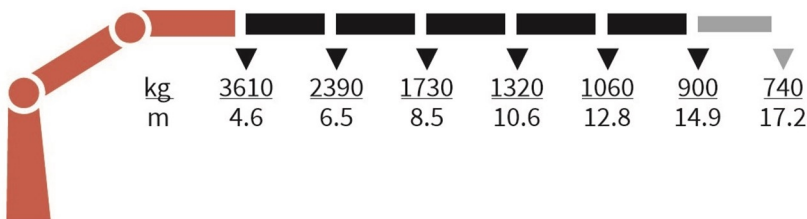
1910-K3-RCS



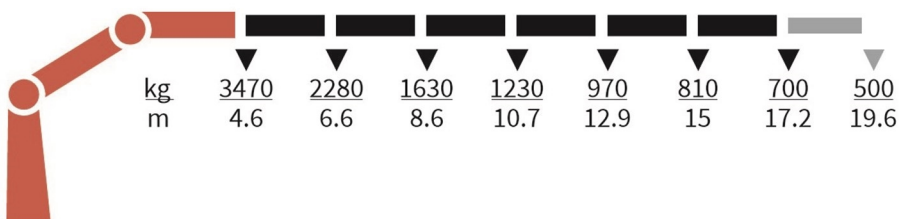
1910-K4-RCS



1910-K5-RCS



1910-K6-RCS



Basics and options

Basics

HMF 1910K-RCS

Internal hose routing
Proportional control valve PVG 32
Single power plus link arm system
Priority flow control
Progressive crane control
Slew braking control
Electronic speed adaptation, HDL-d
Environmentally friendly quality coating
RCL safety system

Options

Control stations
Top seat RC
Heated seat
High stand flexible
Control systems
Radio remote control Maxi
Radio remote control Mini
Radio remote control with Power display
Extra digital outputs
Electrical options
Spotlight
Voltage
Extra valves
Extra valves in hose guides
Extra valves in hose guides, raised
Extra valves in hose reels, internally led
Extra valves in hose reels, externally led
Multi-coupling
Hydraulic hoist
Full hoist preparation
Hydraulic hoist 1500
Hydraulic hoist 2500
2-part snatch block
Hydraulics
Ball valve for tank
Oil cooler, medium
Oil cooler, large
4 manually controlled available stabilizer functions
2 manually controlled available stabilizer functions
1-4 available radio remote-controlled functions
Hydraulic functions for separate traverse
3rd extra valve
Biodegradable oil
Oil tank 90 l mounted on the crane
Radio remote control of stabilizer beams and stabilizer legs on crane
Temperature monitoring
Mechanical options
Manual extension
Hook for manual extension
Crane orientation
Shielding of load-holding valve

Shielding of jib cylinder
Mounting bolt kit
Fittings for mounting bolt kits
Stability and safety
Electronic vehicle stability - EVS
AutoSwitch
Cylinder limitation
2CYBEL-I
Limitation of working area – horizontal
Cabin anti-crash
2-stage load moment limitation
Preparation for alternative stability system
Stabilizer duty control
Alarm flash on stabilizer legs
Calibration bypass
Light tower
High stand safety system - quadrant
Quadrant operator protection system
Beam and height warning
Beam and park warning
Stabilizer leg warning
Stabilizer beams and legs
Hydraulic stabilizer beams 4.6 m - 6.5 m
Hydraulic swing-up stabilizer legs
Manual swing-up stabilizer legs with gas spring
Manual swing-up stabilizer legs
Fixed vertical stabilizer legs
Fixed vertical stabilizer legs, long
Footplate with ball joint
Footplate extended
Manual stabilizer beams 4.6 m - 5.6 m
Colours
RAL colors