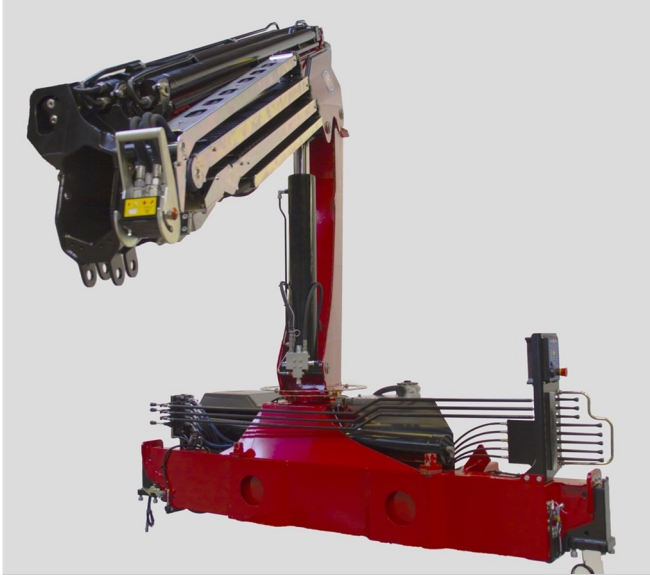


HMF 2030T-MCS

The HMF 2030T-MCS is designed for the difficult working conditions of T-boom range cranes.



Main benefits

- Optimized lifting capacity
- Wear-resistant
- Strong and versatile

Efficient and precise crane

The HMF 2030T-MCS is efficiently protected against weather conditions. Surface treatment with powder coating, ZetaCoat pre-treatment, stainless steel and galvanization ensure that the crane looks good and has a long lifespan.

A comprehensive lighting pack with light over control positions and efficient work light, an insert with lifting eye that allows for as much space as possible below the extended jib extension system as well as other equipment optimising crane operation are available.

The HMF RCL safety system is constantly monitoring the crane's conditions as regards load moment, operation and function thus making it safer and easier to operate the crane.

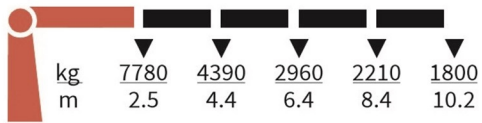
Additionally, the crane can be delivered with HMF's load-dependent EVS system monitoring and ensuring stability.

PERFORMANCE	2030-T4	2030-T5
Load Moment (tm)	19,8	19,7
Hydraulic reach (m)	10,2	12,2
Weight excl. stabilizers (Kg)	1695	1815
Weight of stabilizers, standard (Kg)	275	275
Lift-to-weight ratio	10,1	9,4
Slewing Angle (°)	400	400
Slewing torque (kgm)	2380	2380
Working pressure (bar)	330	330
GEOMETRY		
Height above mounting surface (mm)	2610	2610
Width, folded, standard (mm)	2500	2500
Length of crane, no extra valves (mm)	820	820

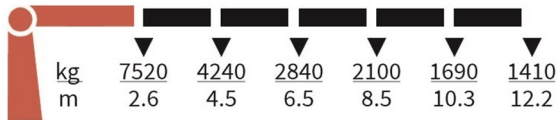
Lifting Capacity



2030-T4-MCS



2030-T5-MCS



Basics and options

Basics

HMF 2030T-MCS

Single power plus link arm system
Internal hose routing
Environmentally friendly quality coating
RCL safety system
Electro-hydraulic speed adaptation - HDL-h

Options

Electrical options
Spotlight
Voltage
Light over control positions
Extra valves
Extra valves in hose guides
Multi-coupling
Hydraulics
Ball valve for tank
2 manually controlled available stabilizer functions
Biodegradable oil
High-pressure filter
Change-over valve
Oil tank 80 l mounted on the crane
Mechanical options
Hook for manual extension
Crane orientation
Shielding of jib cylinder
Mounting bolt kit
Fittings for mounting bolt kits
Insert for increased lifting height
Stability and safety
Electronic vehicle stability for MCS cranes
Cylinder limitation
Cylinder and beam limitation
2-section Cylinder and beam limitation
2-stage load moment limitation
Preparation for alternative stability system
Alarm flash on stabilizer legs
Calibration bypass
Beam and height warning
Stowing lock, boom system
Stabilizer beams and legs
Hydraulic swing-up stabilizer legs
Manual swing-up stabilizer legs with gas spring
Manual swing-up stabilizer legs
Fixed vertical stabilizer legs
Fixed vertical stabilizer legs, long
Footplate with ball joint
Footplate extended
Hydraulic stabilizer beams 5.6 m - 6.5 m
Manual stabilizer beams 5.6 m
Colours
RAL colors