

# HMF 2530L-RCS

The HMF 2530L-RCS is a long boom crane boosting high working speeds.



## Main benefits

- Radio remote control system for total freedom
- Single link arm system on the jib for extra strength and stability
- Powerful slewing torque

## A strong and versatile crane

The HMF 2530L-RCS is a long boom crane developed for demanding professionals that require to radio remote control the crane. The crane has a compact design as well as fast and easy daily maintenance.

HMF's high quality surface treatment EQC (Environmentally friendly Quality Coating) ensures a particularly sturdy and durable surface, which allows the crane to retain a high resale value.

HMF's long boom cranes are equipped with an RCL safety system, which is a safety system independent of the operator's doings. Through monitoring of the current load moment on the crane and working conditions, the RCL safety system protects the crane against overloading and consequential damage.

Additionally, the crane can be delivered with HMF's load-dependent EVS system monitoring and ensuring stability.

PERFORMANCE	2530-L2	2530-L3	2530-L4	2530-L5
Load Moment (tm)	23,6	22,9	22,3	21,8
Hydraulic reach (m)	9,4	11,5	13,4	15,4
Weight excl. stabilizers (Kg)	2015	2170	2325	2465
Weight of stabilizers, standard (Kg)	290	290	290	290
Lift-to-weight ratio	10,7	9,7	8,8	8,2
Slewing Angle (°)	450	450	450	450
Slewing torque (kgm)	2710	2710	2710	2710
Working pressure (bar)	345	345	345	345
GEOMETRY				
Height above mounting surface (mm)	2600	2600	2600	2600
Width, folded, standard (mm)	2500	2500	2500	2500
Length of crane, no extra valves (mm)	815	815	815	815

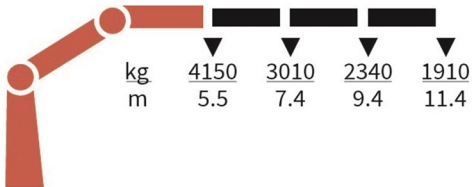
# Lifting Capacity



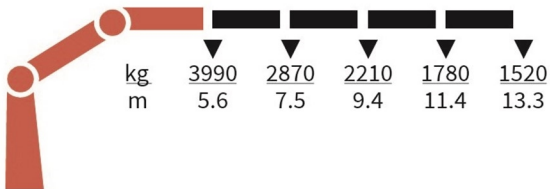
2530-L2-RCS



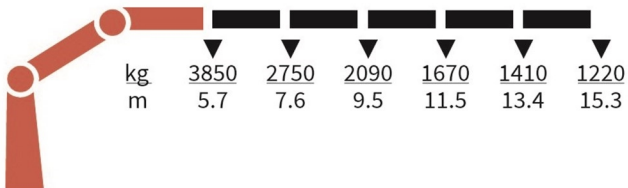
2530-L3-RCS



2530-L4-RCS



2530-L5-RCS



# Basics and options

HMF 2530L-RCS

## Basics

Electronic speed adaptation, HDL-d
Progressive crane control
Priority flow control
Single power plus link arm system
Proportional control valve PVG 32
Internal hose routing
Environmentally friendly quality coating
RCL safety system

## Options

<b>Control stations</b>
Top seat RC
<b>Control systems</b>
Radio remote control Maxi
Radio remote control Mini
<b>Electrical options</b>
Spotlight
Voltage
<b>Extra valves</b>
Extra valves in hose guides
Extra valves in hose reels, internally led
<b>Hydraulics</b>
4 manually controlled available stabilizer functions
2 manually controlled available stabilizer functions
1-4 available radio remote-controlled functions
Biodegradable oil
Oil cooler, medium
Radio remote control of stabilizer beams and stabilizer legs on crane
Temperature monitoring
<b>Mechanical options</b>
Crane orientation
Shielding of load-holding valve
Shielding of jib cylinder
Mounting bolt kit
Fittings for mounting bolt kits
Ladder for top seat
<b>Stability and safety</b>
Electronic vehicle stability - EVS
Cylinder limitation
2-section Cylinder and beam limitation
2-stage load moment limitation
Preparation for alternative stability system
Alarm flash on stabilizer legs
Calibration bypass
Light tower
Beam and height warning
Stabilizer leg warning
<b>Stabilizer beams and legs</b>
Hydraulic stabilizer beams 5.6 m - 7.4 m
Hydraulic swing-up stabilizer legs
Manual swing-up stabilizer legs with gas spring
Manual swing-up stabilizer legs

Fixed vertical stabilizer legs
Footplate with ball joint
Footplate extended
Fixed vertical stabilizer legs, short
Manual stabilizer beams 5.6 m
<b>Colours</b>
RAL colors