

HMF 3220K-RCS

The HMF 3220K-RCS is a versatile crane with high manoeuvrability and working speed.



Main benefits

- Great flexibility and smooth operation for demanding tasks
- High lifting capacity
- Strength and operational safety

A sturdy and flexible crane

The HMF 3220K-RCS is a versatile crane with a wide variety of options. The crane can be used either as a hook crane, with hoist and/or combined with HMF's Fly-Jibs, which provides the user with a total impression of easy operation and unique capacity, maximum safety and great control of lifting tasks.

The crane provides for low costs of ownership for you as a crane owner. With a low tare weight and reduced space requirements, maximum utilization of the truck body as well as savings on fuel are ensured.

The crane is moreover designed in a service-friendly manner and with internal hose routing to protect against external damage. This ensures easy maintenance, little downtime and ultimately low costs of ownership.

Additionally, the crane can be delivered with HMF's load-dependent EVS system monitoring and ensuring stability.

Why choose the 3220K?

- The dual link arm system ensures strength and stability in all boom positions.

PERFORMANCE	3220-K2	3220-K3	3220-K4	3220-K5	3220-K6	3220-K7	3220-K8
Load Moment (tm)	30,7	29,8	29,5	28,7	27,9	27,8	27,1
Hydraulic reach (m)	8,3	10,3	12,4	14,6	16,8	19	21,3
Weight excl. stabilizers (Kg)	2590	2790	2990	3160	3320	3470	3595
Weight of stabilizers, standard (Kg)	370	370	370	370	370	370	370
Lift-to-weight ratio	10,4	9,4	8,8	8,1	7,6	7,2	6,8
Slewing Angle (°)	∞	∞	∞	∞	∞	∞	∞
Slewing torque (kgm)	3800	3800	3800	3800	3800	3800	3800
Working pressure (bar)	365	365	365	365	365	365	365
GEOMETRY							
Height above mounting surface (mm)	2350	2350	2350	2350	2350	2350	2350
Width, folded, standard (mm)	2500	2500	2500	2500	2500	2500	2500
Length of crane, no extra valves (mm)	1024	1024	1024	1024	1024	1130	1130

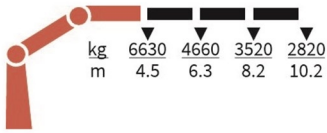
Lifting Capacity



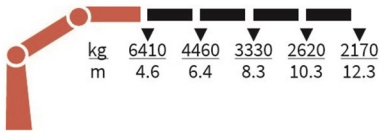
3220-K2-RCS



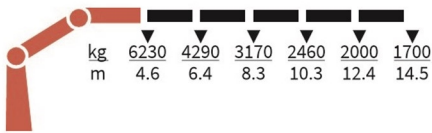
3220-K3-RCS



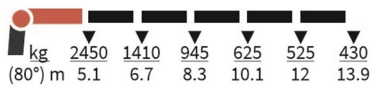
3220-K4-RCS



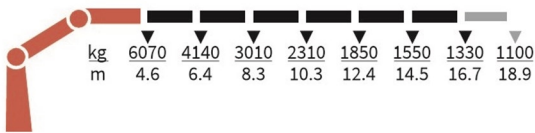
3220-K5-RCS



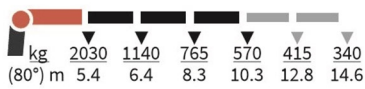
FJ1000-K5



3220-K6-RCS



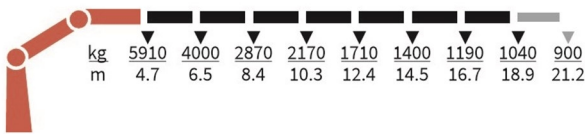
FJ600-K3



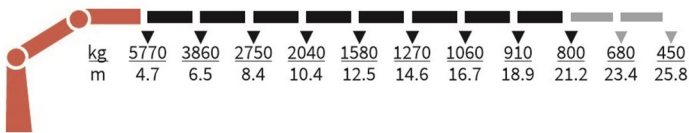
FJ600-K4



3220-K7-RCS



3220-K8-RCS



Basics and options

Basics

HMF 3220K-RCS

Electronic speed adaptation, HDL-d
Progressive crane control
Priority flow control
Dual Power plus link arm system
Proportional control valve PVG 32
Radio remote control of stabilizer beams and stabilizer legs on crane
Internal hose routing
Environmentally friendly quality coating
RCL safety system

Options

Control stations
Personnel basket on crane – MEWP
Control systems
Radio remote control Maxi
Radio remote control Mini
Radio remote control with Power display
Extra digital outputs
Electrical options
Spotlight
Voltage
Extra valves
Extra valves in hose guides
Extra valves in hose reels, internally led
Extra valves in hose reels, externally led
Multi-coupling
Fly-jib
Fly-jib 600
Fly-jib 1000
Personnel basket on Fly-jib
Hydraulic hoist
Full hoist preparation
Hydraulic hoist 2500
2-part snatch block
Hydraulics
Ball valve for tank
Oil cooler, medium
Oil cooler, large
1 radio remote controlled available proportional function
3rd extra valve
Biodegradable oil
Oil tank 160 l mounted on the crane
Temperature monitoring
Mechanical options
Manual extension
Shielding of load-holding valve
Protective guard at the rear of the jib
Mounting bolt kit
Fittings for mounting bolt kits
Stability and safety
Electronic vehicle stability - EVS

AutoSwitch
Cylinder limitation
2-section Cylinder and beam limitation
2CYBEL-I
Limitation of working area – horizontal
Cabin anti-crash
2-stage load moment limitation
Preparation for alternative stability system
Alarm flash on stabilizer legs
Calibration bypass
Light tower
Beam and height warning
Stabilizer leg warning
Stabilizer beams and legs
Hydraulic swing-up stabilizer legs
Manual swing-up stabilizer legs with gas spring
Fixed vertical stabilizer legs
Footplate with ball joint
Footplate extended
Hydraulic stabilizer beams 5.6 m - 6.4 m