

HMF 7020K-RCS

The HMF 7020K-RCS will give you speed and strength for heavy lifting along with precise control.



Main benefits

- Strength and operational safety
- Great flexibility and smooth operation for demanding tasks
- Suited for a wide range of tasks from heavy lifting to assembly work

A strong and safe crane with a lot of Power to lift

The 7020K-RCS is one of our most powerful cranes. It is available with a wide range of options, so that it can be modified according to your exact needs.

The crane, furthermore, comes with a number of economic advantages. The low tare weight and reduced space requirements of the crane provide full utilisation of your truck body as well as savings on fuel.

The construction of the crane is moreover designed in a service-friendly manner, which provides for a long lifespan of your crane and in the end low costs of ownership.

Why choose the 7020K?

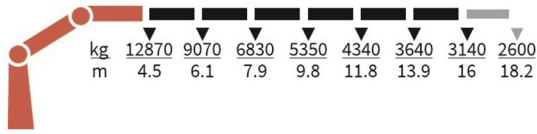
- A multi-purpose crane for different tasks that comes with many options.
- One of the fastest, strongest and most operational cranes on the market.

PERFORMANCE	7020-K6	7020-K7	7020-K8
Load Moment (tm)	57,9	57,2	56,1
Hydraulic reach (m)	16,1	18,3	20,6
Weight excl. stabilizers (Kg)	5715	5915	6115
Weight of stabilizers, standard (Kg)	925	925	925
Lift-to-weight ratio	8,7	8,4	8
Slewing Angle (°)	∞	∞	∞
Slewing torque (kgm)	7142	7142	7142
Working pressure (bar)	375	375	375
GEOMETRY			
Height above mounting surface (mm)	2435	2435	2455
Width, folded, standard (mm)	2550	2550	2550
Length of crane, no extra valves (mm)	1540	1540	1540

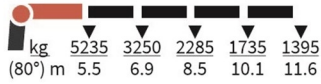
Lifting Capacity



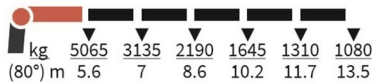
7020-K6-RCS



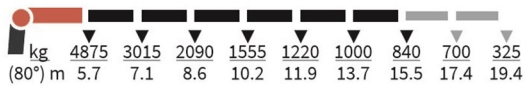
FJ1400-K4



FJ1400-K5



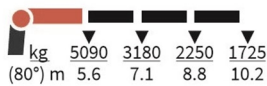
FJ1400-K6



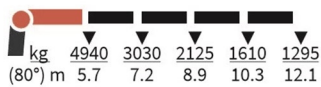
7020-K7-RCS



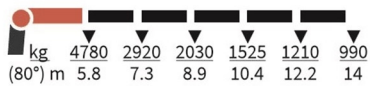
FJ1400-K3



FJ1400-K4



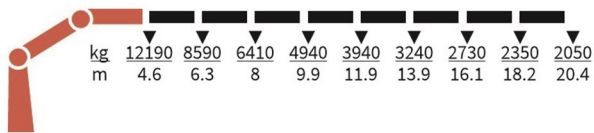
FJ1400-K5



FJ1400-K6



7020-K8-RCS



Basics and options

Basics

HMF 7020K-RCS

Electronic speed adaptation, HDL-d
Progressive crane control
Priority flow control
Dual Power plus link arm system
Two slewing gears
Proportional control valve PVG 32
Radio remote control of stabilizer beams and stabilizer legs on crane
Internal hose routing
Environmentally friendly quality coating
RCL safety system

Options

Control systems
Radio remote control Maxi
Radio remote control with Power display
Extra digital outputs
Electrical options
Spotlight
Voltage
Extra valves
Extra valves in hose reels, externally led
Multi-coupling
Fly-jib
Fly-jib 1400
Personnel basket on Fly-jib
Hydraulic hoist
Hydraulic hoist 3200
2-part snatch block
Hydraulics
Oil cooler, large
1 radio remote controlled available proportional function
Hydraulic functions for separate traverse
Biodegradable oil
Available hydraulic functions, crane mode
Available hydraulic functions, stabilizer mode
Ball valve for tank
Oil tank 320 l mounted on the crane
Oil tank 390 l mounted on the crane
Prepared for front stabilizer
Temperature monitoring
Mechanical options
Manual extension
Protective guard at the rear of the jib
Mounting bolt kit
Fittings for mounting bolt kits
Stability and safety
Electronic vehicle stability - EVS
AutoSwitch
Cylinder limitation
2CYBEL-I
Limitation of working area - horizontal

Cabin anti-crash
Preparation for alternative stability system
Alarm flash on stabilizer legs
Calibration bypass
Light tower
Beam and height warning
Stabilizer leg warning
Stabilizer beams and legs
Hydraulic stabilizer beams 8.4 m
Hydraulic swing-up stabilizer legs
Manual swing-up stabilizer legs
Footplate with ball joint
Colours
RAL colors