

HMF 7020OK-RCS

The HMF 7020OK-RCS will give you an optimum lifting capacity and precise control.



Main benefits

- Suited for a wide range of tasks from heavy lifting to assembly work
- OK boom system for maximum reach and utilization of the truck body
- Great flexibility and smooth operation for demanding tasks

A strong and safe crane with a lot of Power to lift

The 7020OK-RCS has an optimized reach and utilization of space. The crane is designed with extra reach and with optimized space on the truck body. It comes with several options, which makes it tailorable to your needs.

This design provides for excellent utilization of your truck body without compromising with the reach and strength of your crane.

The crane is furthermore designed with internal hose routing and in a service-friendly manner to minimize external damage. All which ensure a long lifespan of your crane as well as low costs of ownership.

Why choose the 7020OK?

- The best space saving dimensions in its category.
- Precise and user-friendly operation makes the crane operational in difficult conditions.

| PERFORMANCE | 7020-OK2 | 7020-OK3 | 7020-OK4 | 7020-OK5 | 7020-OK6 |
|---------------------------------------|----------|----------|----------|----------|----------|
| Load Moment (tm) | 62,2 | 60,7 | 60 | 58,3 | 58,2 |
| Hydraulic reach (m) | 8,3 | 10,4 | 12,4 | 14,7 | 17 |
| Weight excl. stabilizers (Kg) | 4465 | 4765 | 5065 | 5335 | 5575 |
| Weight of stabilizers, standard (Kg) | 925 | 925 | 925 | 925 | 925 |
| Lift-to-weight ratio | 11,5 | 10,7 | 10 | 9,3 | 9 |
| Slewing Angle (°) | ∞ | ∞ | ∞ | ∞ | ∞ |
| Slewing torque (kgm) | 7142 | 7142 | 7142 | 7142 | 7142 |
| Working pressure (bar) | 375 | 375 | 375 | 375 | 375 |
| GEOMETRY | | | | | |
| Height above mounting surface (mm) | 2435 | 2435 | 2435 | 2435 | 2470 |
| Width, folded, standard (mm) | 2550 | 2550 | 2550 | 2550 | 2550 |
| Length of crane, no extra valves (mm) | 1340 | 1340 | 1340 | 1340 | 1340 |

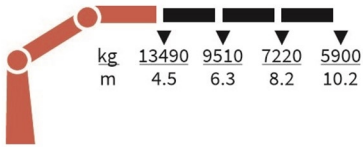
Lifting Capacity



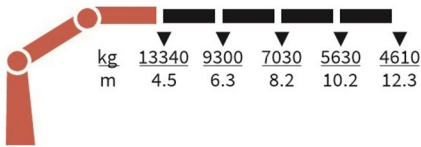
7020-OK2-RCS



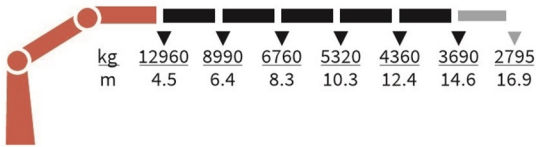
7020-OK3-RCS



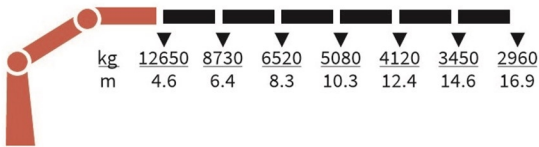
7020-OK4-RCS



7020-OK5-RCS



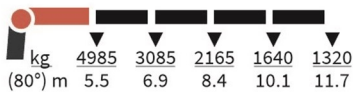
7020-OK6-RCS



FJ1200-K3



FJ1200-K4



FJ1200-K5



FJ1200-K6



Basics and options

Basics

HMF 70200K-RCS

| |
|---|
| Electronic speed adaptation, HDL-d |
| Progressive crane control |
| Priority flow control |
| Dual Power plus link arm system |
| Two slewing gears |
| Proportional control valve PVG 32 |
| Radio remote control of stabilizer beams and stabilizer legs on crane |
| Internal hose routing |
| Environmentally friendly quality coating |
| RCL safety system |

Options

| |
|---|
| Control systems |
| Radio remote control Maxi |
| Radio remote control with Power display |
| Extra digital outputs |
| Electrical options |
| Spotlight |
| Voltage |
| Extra valves |
| Extra valves in hose guides |
| Extra valves in hose reels, externally led |
| Multi-coupling |
| Fly-jib |
| Fly-jib 1200 |
| Personnel basket on Fly-jib |
| Hydraulic hoist |
| Hydraulic hoist 3200 |
| 2-part snatch block |
| Hydraulics |
| Oil cooler, large |
| 1 radio remote controlled available proportional function |
| Hydraulic functions for separate traverse |
| Biodegradable oil |
| Available hydraulic functions, crane mode |
| Available hydraulic functions, stabilizer mode |
| Ball valve for tank |
| Oil tank 320 l mounted on the crane |
| Oil tank 390 l mounted on the crane |
| Prepared for front stabilizer |
| Temperature monitoring |
| Mechanical options |
| Manual extension |
| Protective guard at the rear of the jib |
| Mounting bolt kit |
| Fittings for mounting bolt kits |
| Stability and safety |
| Electronic vehicle stability - EVS |
| AutoSwitch |
| Cylinder limitation |
| 2CYBEL-I |

| |
|--|
| Limitation of working area – horizontal |
| Cabin anti-crash |
| Preparation for alternative stability system |
| Alarm flash on stabilizer legs |
| Calibration bypass |
| Light tower |
| Beam and height warning |
| Stabilizer leg warning |
| Stabilizer beams and legs |
| Hydraulic stabilizer beams 8.4 m |
| Hydraulic swing-up stabilizer legs |
| Manual swing-up stabilizer legs |
| Footplate with ball joint |
| Colours |
| RAL colors |