

# HMF 340K-RC

The HMF 340K-RC is a sturdy and versatile crane with great flexibility for a wide range of different tasks.



## Main benefits

- Radio remote control system for total freedom
- Very compact design
- Long lifespan

## High lifting capacity in a horizontal boom position

The HMF 340K-RC is a compact knuckle boom crane with an excellent lift-to-weight ratio. This crane is in a compact design with a short platform length which offers good utilisation of the truck body which ultimately means lower cost of ownership.

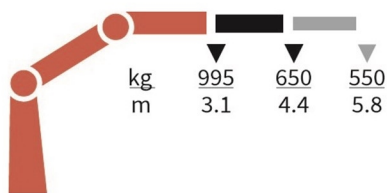
The crane is furthermore reliable and sturdy and can be used for a wide range of different tasks. The link arm on the jib provides a high lifting capacity at long reach in a horizontal boom position. This crane is also available with a width of 2.0 m in order to suit most vehicles.

| PERFORMANCE                           | 340-K1 | 340-K2 | 340-K3 |
|---------------------------------------|--------|--------|--------|
| Load Moment (tm)                      | 3,2    | 3,2    | 3,2    |
| Hydraulic reach (m)                   | 4,39   | 5,76   | 7,15   |
| Weight excl. stabilizers (Kg)         | 418    | 468    | 508    |
| Weight of stabilizers, standard (Kg)  | 72     | 72     | 72     |
| Lift-to-weight ratio                  | 6,5    | 5,9    | 5,5    |
| Slewing Angle (°)                     | 370    | 370    | 370    |
| Slewing torque (kgm)                  | 550    | 600    | 600    |
| Working pressure (bar)                | 220    | 240    | 240    |
| GEOMETRY                              |        |        |        |
| Height above mounting surface (mm)    | 1591   | 1591   | 1591   |
| Width, folded, standard (mm)          | 1700   | 1700   | 1700   |
| Length of crane, no extra valves (mm) | 516    | 516    | 516    |

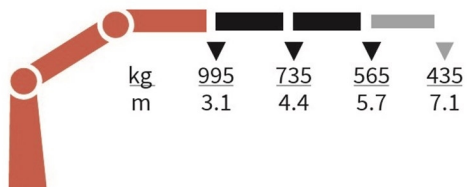
# Lifting Capacity



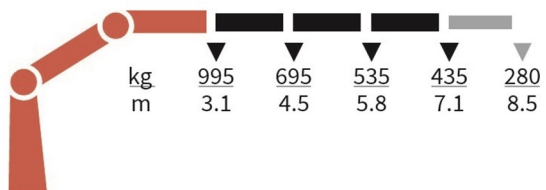
340-K1-RC



340-K2-RC



340-K3-RC



# Basics and options

## Basics

HMF 340K-RC

|  |
|--|
| RCL safety system                        |
| Single power plus link arm system        |
| Environmentally friendly quality coating |
| Proportional control valve PVG 16        |

## Options

|                                    |
|------------------------------------|
| <b>Control systems</b>             |
| Radio remote control Mini          |
| <b>Electrical options</b>          |
| Spotlight                          |
| Voltage                            |
| <b>Extra valves</b>                |
| Extra valves in hose guides        |
| <b>Hydraulics</b>                  |
| Biodegradable oil                  |
| High-pressure filter               |
| Oil tank 20 l mounted on the crane |
| <b>Mechanical options</b>          |
| Manual extension                   |
| Crane orientation                  |
| Mounting bolt kit                  |
| Mechanical slew limitation         |
| Crane width                        |
| <b>Stability and safety</b>        |
| Alarm flash on stabilizer legs     |
| Beam and height warning            |
| <b>Colours</b>                     |
| RAL colors                         |