

HMF 270K-RC

The HMF 270K-RC is a reliable and sturdy crane ideal for smaller vehicles.



Main benefits

- Very compact design
- Radio remote control system for total freedom
- Long lifespan

Improved payload for maximal capacity

The HMF 270K-RC is a compact knuckle boom crane with a reliable and sturdy design. The crane is suitable for many different purposes and is available with two or three hydraulic extensions for extra-long reach.

The crane is designed for great manoeuvrability and is fast and easy to operate. It is furthermore designed with a low tare weight, which secures an improved payload on the truck body.

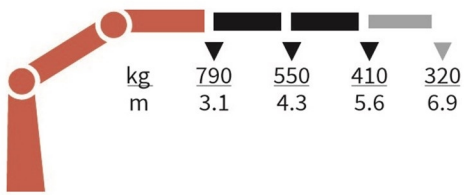
When stowed during transport, the crane can be folded up to a width of only 1.7 m making it possible to mount it on small vehicles. This crane is also available with a width of 2.0 m in order to suit most vehicles.

PERFORMANCE	270-K2	270-K3
Load Moment (tm)	2,5	2,4
Hydraulic reach (m)	5,64	6,99
Weight excl. stabilizers (Kg)	386	421
Weight of stabilizers, standard (Kg)	59	59
Lift-to-weight ratio	5,6	5
Slewing Angle (°)	370	370
Slewing torque (kgm)	390	390
Working pressure (bar)	240	240
GEOMETRY		
Height above mounting surface (mm)	1527	1527
Width, folded, standard (mm)	1700	1700
Length of crane, no extra valves (mm)	538	564

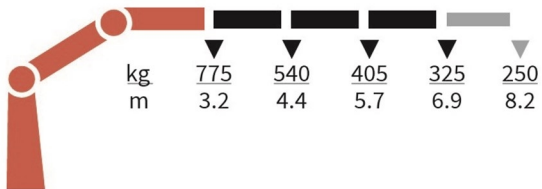
Lifting Capacity



270-K2-RC



270-K3-RC



Basics and options

Basics

HMF 270K-RC

RCL safety system
Environmentally friendly quality coating
Proportional control valve PVG 16

Options

Control systems
Radio remote control Mini
Electrical options
Spotlight
Voltage
Extra valves
Extra valves in hose guides
Hydraulics
Biodegradable oil
High-pressure filter
Oil tank 20 l mounted on the crane
Mechanical options
Manual extension
Crane orientation
Mounting bolt kit
Mechanical slew limitation
Crane width
Stability and safety
Alarm flash on stabilizer legs
Beam and height warning
Colours
RAL colors