

# HMF 270K-MC

The HMF 270K-MC is a versatile crane with a compact installation suited for work with smaller vehicles.



## Main benefits

- Very compact design
- Easy to operate
- Long lifespan

## Improved payload for maximal capacity

The HMF 270K-MC is a compact knuckle boom crane with an excellent lift-to-weight ratio. The crane is suitable for many different purposes and is available with two or three hydraulic extensions for extra-long reach.

The crane is designed for great manoeuvrability and is fast and easy to work with. It is furthermore designed with a low tare weight, which secures an improved payload on the truck body.

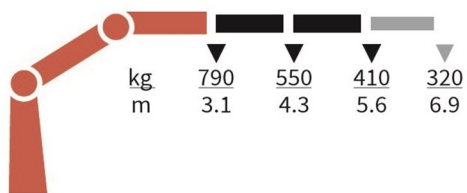
When stowed during transport, the crane can be folded up to a width of only 1.7 m making it possible to mount it on small vehicles. This crane is also available with a width of 2.0 m in order to suit most vehicles.

PERFORMANCE	270-K2	270-K3
Load Moment (tm)	2,5	2,4
Hydraulic reach (m)	5,64	6,99
Weight excl. stabilizers (Kg)	386	421
Weight of stabilizers, standard (Kg)	59	59
Lift-to-weight ratio	5,6	5
Slewing Angle (°)	370	370
Slewing torque (kgm)	390	390
Working pressure (bar)	240	240
GEOMETRY		
Height above mounting surface (mm)	1527	1527
Width, folded, standard (mm)	1700	1700
Length of crane, no extra valves (mm)	538	564

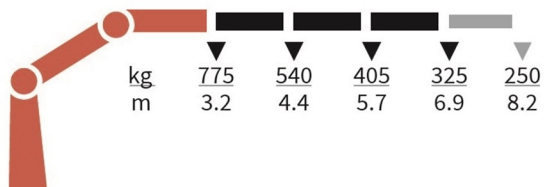
# Lifting Capacity



270-K2-MC



270-K3-MC



# Basics and options

## Basics

HMF 270K-MC

MC
Load indication
Environmentally friendly quality coating

## Options

<b>Electrical options</b>
Spotlight
Voltage
<b>Extra valves</b>
Extra valves in hose guides
<b>Hydraulics</b>
Biodegradable oil
High-pressure filter
Oil tank 20 l mounted on the crane
<b>Mechanical options</b>
Manual extension
Crane orientation
Mounting bolt kit
Mechanical slew limitation
Crane width
<b>Stability and safety</b>
Beam and height warning
CE safety system. Stop button, load indicator and bubble level
Safety system for cranes without CE equipment incl. spirit level
<b>Colours</b>
RAL colors