



PULSEO
GENERATION

ELECTRIC ALL-TERRAIN SCISSOR LIFTS

HS15 E - HS18 E

**ENERGIZE
YOUR
PERFORMANCE**

haulotte.com

Haulotte 
EQUIPMENT

CONTENTS

PULSEO GENERATION	4
--------------------------------	----------



ROUGH TERRAIN PERFORMANCE	6
--	----------



MAXIMUM PRODUCTIVITY	8
-----------------------------------	----------



OPTIMAL SAFETY	10
-----------------------------	-----------



VERSATILITY	14
--------------------------	-----------



SMART ENERGY MANAGEMENT	16
--	-----------



SIMPLIFIED MAINTENANCE	21
---	-----------

MODELS	24
---------------------	-----------

OPTIONS	26
----------------------	-----------

VERSATILITY, OPTIMAL PERFORMANCE,
NO SOUND OR AIR POLLUTION,
REDUCED MAINTENANCE COSTS: **THE
FUTURE OF MACHINERY IS ELECTRIC.**



PULSEO FAMILY IS GROWING...

PULSEO is Haulotte's line of electric rough terrain mobile elevating work platforms. The HS15 E and HS18 E scissor lifts are the most recent additions to this new generation of products.

NO COMPROMISE ON PERFORMANCE

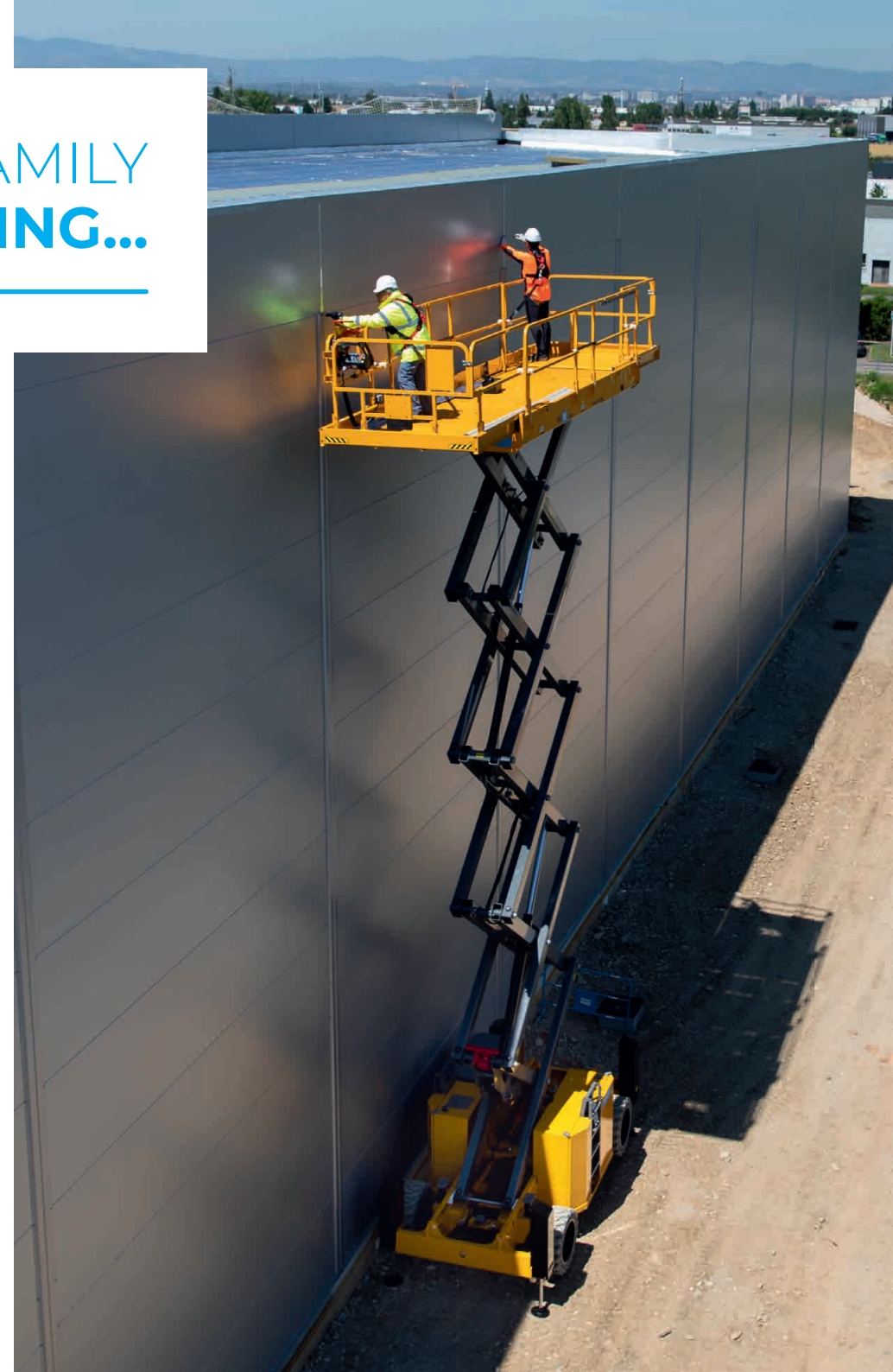
The new **PULSEO** electric scissor lifts combine **remarkable rough terrain** performance with **exceptional load capacities**. They are perfect for even the most demanding construction projects!

OPENING UP NEW OPPORTUNITIES FOR YOU!

Thanks to their full-electric design, **PULSEO** scissor lifts are **silent** and respectful of the environment and people nearby. These versatile machines are perfect for work outdoors, in urban centers, in **low-emissions zones**, and on **green building projects**. They can also be used for **indoor** applications.

WORK WITH TOTAL PEACE OF MIND

No matter the constraints of your work site, you can work without having to worry about your battery life. You have options for **different charging solutions: either connect to the main or use a range extender**.



PLATFORM
UP TO 7.40 M LONG

750 KG
LOAD CAPACITY



15 OR 18 M
VERSIONS

100% ELECTRIC
WITH MULTIPLE
CHARGING SOLUTIONS

ROUGH TERRAIN
PERFORMANCE



ROUGH TERRAIN
PERFORMANCE

GET OVER ANY OBSTACLE

You will be amazed by
the power of the **PULSE0**
generation of scissor lifts.



OPTIMAL DISTRIBUTION OF POWER

The **mechanical axle transmission** and **4-wheel drive** provide incredible power and exceptional rough terrain performance.

EXCELLENT ROUGH TERRAIN ABILITIES

The HS15 E and HS18 E scissor lifts can climb **slopes up to 45%** and have a **high ground clearance**. They can move over highly uneven terrain and adapt to any situation.



ROUGH TERRAIN
PERFORMANCE

GET EXCEPTIONAL GRIP

The HS15 E and HS18 E scissor lifts can move on even the roughest terrain.

STRONG TRACTION

The **oscillating axle** adapts the position of the front wheels to irregularities in the terrain, helping maintain ground contact.

The solid **cured-on tires** grip the ground and absorb shocks.

IN CASE OF LOW TRACTION...

The **manual differential wheel lock** offers additional power. By locking the differential, the motor's power is distributed to each of the wheels. That way, the machine can get out of tricky situations.



MAXIMUM
PRODUCTIVITY

BENEFIT FROM A REMARKABLE LOAD CAPACITY

EXAMPLE OF LOAD FOR INSTALLING CLADDING

4x  440 kg

+ 2x  40 kg

+ 2x  30 kg

+ 10x  240 kg

750 kg



LIMITED BACK AND FORTH BETWEEN THE GROUND AND THE WORK AREA

The HS15 E and HS18 E scissor lifts allow you to **lift a load up to 750 kg** to help with even your most demanding applications like cladding, insulation, maintenance, and more.



MAXIMUM
PRODUCTIVITY

BOOST YOUR PRODUCTIVITY

PULSEO machines
improve your productivity.



A BROAD WORK AREA

The HS15 E and HS18 E scissor lifts are equipped with **broad work platforms** allowing you to reach up to 7.40 m long work area.

MAXIMUM EFFICIENCY

HS15 E and HS18 E MAX allows you to drive at **full height**, so you can easily move around in your work area.



OPTIMAL
SAFETY

WORK IN TOTAL SAFETY

STABILITY IN ALL SITUATIONS

The **PULSEO** HS15 E and HS18 E scissor lifts can be used on terrain with a slope up to 5°. On more uneven grounds, the outriggers correct for the tilt of the platform. **Centralized or individual leveling** guarantees total safety while you're elevated.

PRECISION OF MOVEMENT

Proportional controls allow you to perform progressive maneuvers without jolting for a safe work area approach.





OPTIMAL
SAFETY

Lighting of the upper and
lower control boxes



Lighting of
the operating area
around the machine



Safe access



Haulotte 
ACTIV' LIGHTING
SYSTEM

AN INNOVATIVE LIGHTING SYSTEM

Loading and unloading a platform is a tricky process, especially in conditions with limited visibility. The **PULSEO** platforms are equipped with the Haulotte Activ' Lighting System. LED spotlights light up the controls and the operating area around the machine so that the operators can perform their maneuvers in total safety.

EASILY LOAD YOUR PLATFORM, **EVEN AT NIGHT**



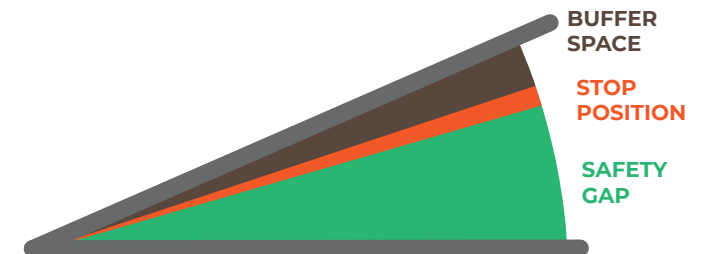
OPTIMAL
SAFETY

SAFETY IS OUR PRIORITY

Haulotte 
ACTIV' SHIELD
B A R

SECONDARY GUARDING SYSTEM

Haulotte Activ'Shield Bar system effectively **protects the driver from being crushed**. If in danger, the driver is pushed against the bar and the machine automatically stops. The safety gap protects the driver.







VERSATILITY

EXPAND YOUR POTENTIAL OPERATIONS WITH A ZERO-EMISSIONS LIFT

WORK WITHOUT POLLUTING EMISSIONS

More and more cities and companies are implementing initiatives to reduce their environmental footprints. Thanks to their 100% electric design, the HS15 E and HS18 E scissor lifts offer a **clean alternative** that works in any situation:

- Low emission zones (LEZ)
- Certified green building projects
- Areas where access is prohibited for internal combustion engines

WORK SILENTLY

The **PULSEO** generation offers an **incredibly silent experience** for operators and for people nearby. Its quietness opens the door to new applications:

- Areas requiring silence: hospitals, offices, schools, etc.
- Public places: malls, pedestrian streets, airports
- Work at night without bothering neighbors!



2



VERSATILITY

3

WORK INDOORS

With their 100% electric design, the HS15 E and HS18 E are optimized for **the most demanding indoor work**.

> LEAVE NO TRACE

Available with **non-marking wheels**, the new **PULSEO** platforms operate indoors without leaving marks on the floor.



> FIRST IN, LAST OUT

PULSEO models offer two machines in one. They can be used throughout your entire project for **multiple applications**. That way, you can be sure to keep your transportation costs down and have your machine available when you need it.





SMART ENERGY MANAGEMENT

CHOOSE YOUR CHARGING SOLUTION ACCORDING TO YOUR NEEDS

Pulseo scissor lifts adapt to your constraints: access to electricity, available charging time, and more.

1 STANDARD CHARGER – ON THE MAIN

The integrated charger allows you to **charge the batteries at the end of the work day** using ordinary 110-230V electrical power.

2 ACCELERATED CHARGER – ON THE MAIN

Using the **380V accelerated charger** allows you to charge the batteries to 80% in just three hours!



SMART ENERGY MANAGEMENT

3

WORK LONGER WITH THE RANGE EXTENDER

PULSEO scissor lifts can be equipped with a **removable range extender that's interchangeable** between the models of the line. It allows you to get around the constraints of having access to the electrical grid on your work site by charging the batteries directly. The machine is 100% functional during **accelerated charging**, which can be completed in the span of a break.



The range extender has a **generator feature** that can be used to power the platform's outlet.

Its **low fuel consumption** significantly reduces operating costs compared to a traditional diesel-powered machine.



SMART ENERGY MANAGEMENT



TAKE CARE OF YOUR BATTERIES



Reduce your maintenance costs with
Haulotte Activ'Energy Management!
This solution optimizes the performance
and lifespan of your batteries.



OPTIMAL BATTERY LIFE AND CHARGING TIME

The **smart charger** combined with the **BMS** (Battery Monitoring System) helps you control the battery's operating and charging settings in real time. That way, the charging curve is adapted to the recommendations of the battery manufacturers.



EXTENDED LIFESPAN

A **desulfation cycle** allows you to do a long charge cycle to restore the battery and optimize its performance in the long term.

After a deep discharge, the smart charger uses a slow charging cycle to revive the battery without damaging it.



EASIER MAINTENANCE

Notifications appear on the Haulotte Activ'Screen to remind you of best practices for battery usage and maintenance, such as the need to fully charge or to add water.



SMART ENERGY MANAGEMENT

CENTRALIZED BATTERY FILLING

It's recommended that you add water to the batteries once a week. Haulotte has developed two solutions to make this task easier.

EASY

EASY MAINTENANCE PACK

Using a **centralized filling system**, the technician can simultaneously fill all batteries. The Haulotte Activ'Screen and the water level sensor are connected so that you get notifications when refilling is required.

AUTO

AUTO MAINTENANCE PACK

To eliminate maintenance, **water filling can be automated**. A built-in water tank automatically fills the batteries when they need it. Technicians only need to top off the holding tank periodically.







**SIMPLIFIED
MAINTENANCE**



Direct access to the diagnostics
and settings menus

EASILY PERFORM YOUR DIAGNOSTICS

Haulotte 
ACTIV' SCREEN

SETTINGS AND DIAGNOSTICS INTERFACE

The Haulotte Activ'Screen **simplifies everyday operations** for users and technicians.

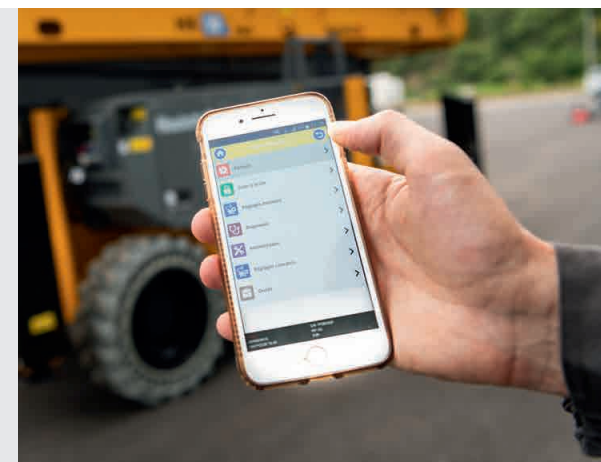
It's useful for:

- > configuring the machine settings,
- > providing the user with information: identification of alarms, tilt, overloading, etc.
- > accessing the list of preventative maintenance operations,
- > diagnosing and resolve malfunctions, if necessary.



**MOBILE
DIAGNOSTICS
TOOL**

All of the features of the Haulotte Activ'Screen are available on mobile devices via the **Haulotte Diag app**.





SIMPLIFIED
MAINTENANCE

EASILY
PERFORM
YOUR
MAINTENANCE



MAINTENANCE-FREE ASYNCHRONOUS (AC) MOTORS

Known for their performance, reliability, and robustness, asynchronous motors **don't require any regular maintenance.**

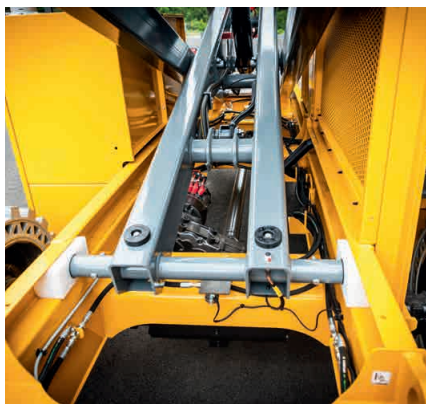
DIRECT ACCESS TO COMPONENTS

Featuring **full swing doors** and service-oriented design, components requiring regular maintenance are **easily accessible**. This makes maintenance operations easier and reduces the time they take.



SIMPLIFIED MAINTENANCE

TRUST IN HAULOTTE STANDARDS



Carefully designed guide for wires and hoses



Anti-corrosion treatment on axles, fasteners and painted components



Mechanical axle drive design uses fewer hydraulics



Reinforced covers to protect the outriggers



On tough projects, machines are exposed to shocks and bad weather. It is essential that they be robust.

The **HS15 E and HS18 E platforms** have Haulotte's high quality standards built into them. They have been subjected to rigorous endurance testing and accelerated aging cycles to **guarantee their reliability**.

MODELS

DISCOVER THE NEW MODELS IN THE PULSEO GENERATION

	HS15 E	HS15 E PRO	HS18 E MAX	HS18 E	HS18 E PRO
Maximum working height	15m		18m		18m
Maximum platform driving height	15m		18m		13m
4-wheel drive	●		●		●
Outriggers with automatic or individual leveling	●		●		●
Load capacity	750 kg/4 people		750 kg/4 people		750 kg/4 people
Oscillating axle	-	●	-	-	●
Standard platform + 1 extension – Length: 4.80 m	●	-	-	●	-
Standard platform + 2 extensions – Length: 5.80 m	○	●	●	○	●
XL platform + 2 extensions – Length: 7.40 m	○	○	-	○	○
Swing door access	○	○	○	○	○
Haulotte Activ'Energy Management: EASY maintenance pack	●	●	●	●	●
Haulotte Activ'Energy Management: AUTO maintenance pack	○	○	○	○	○
Haulotte Activ'Screen	●	●	●	●	●
Haulotte Activ'Lighting System	-	●	○	-	●
Haulotte Activ'Shield Bar	○	○	○	○	○
Integrated 110/230V smart charger	●	●	●	●	●
380V smart rapid charger	○	○	○	○	○
Range extender	○	○	○	○	○

● Standard / ○ Option / - Not available



ROUGH TERRAIN PERFORMANCE

- > 4-wheel drive
- > Oscillating axle
- > Differential wheel lock



HIGH PRODUCTIVITY

- > Load capacity of 750 kg / 4 people
- > Broad platform, extendable up to 7.40 m
- > Driveable at full height
- > First in, last out



VERSATILITY

- > Electric architecture
- > Environmentally friendly
- > Silent
- > Indoor / outdoor use



OPTIMAL SAFETY

- > Haulotte Activ'Lighting System
- > Haulotte Activ'Shield Bar
- > Proportional controls



SMART ENERGY MANAGEMENT

- > Haulotte Activ'Energy Management
- > Accelerated charging modes with the main or removable range extender



SIMPLIFIED MAINTENANCE

- > Centralized battery filling
- > Haulotte Activ'Screen
- > Compatibility with remote telematic solutions
- > Easy access to components



OPTIONS

CHOOSE THE
EQUIPMENT
**THAT'S BEST
FOR THE WORK
YOU DO**

ENERGY

- > Range Extender –
5.5 KW removable
- > 380V accelerated charger
- > Automatic centralized
battery filling

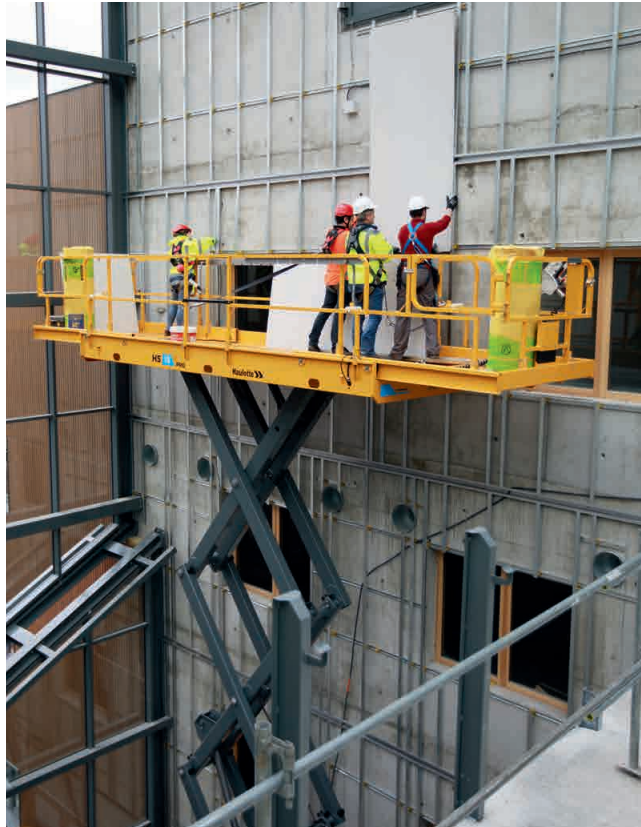
The availability of options varies
according to region. Please contact
your Haulotte representative.

OPTIONS



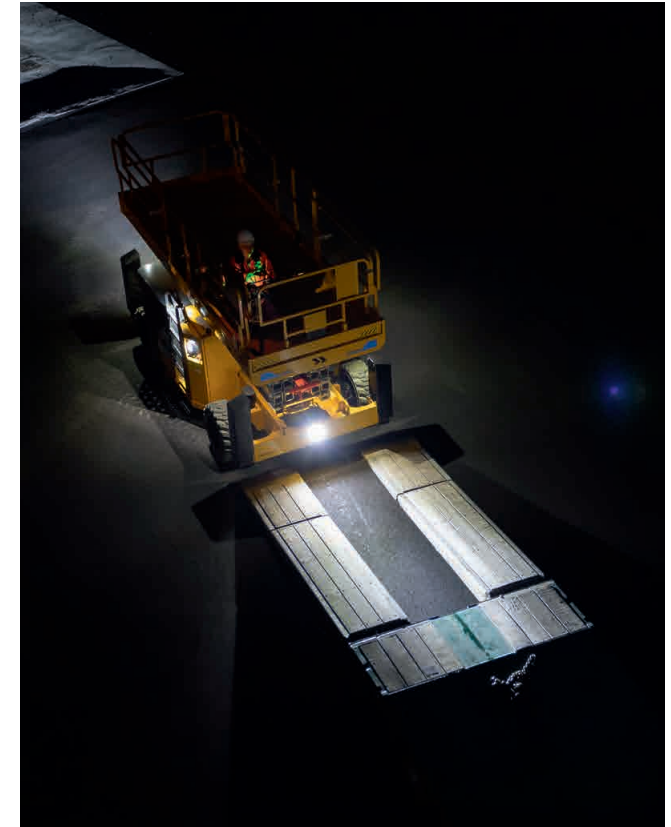
ENVIRONMENT

- > Arctic or cold weather kits
- > Bio hydraulic oil
- > Hostile environment kit
- > Non-marking tires
- > Upper control box protection



PRODUCTIVITY

- > Glazier pack & pipe cradle
- > Air line to platform
- > Swing doors
- > XL deck with two extensions
- > Platform socket



SAFETY

- > Haulotte Activ'Lighting System
- > Haulotte Activ'Shield Bar
- > Scissor stack protection
- > Platform lighting
- > RC circuit breaker

PULSEO
GENERATION



Non-contractual document. We reserve the right to modify the technical characteristics in this document without prior notice. Photo credits: ©Trenia, ©Haulotte, 400116980, 05/2024

HAULOTTE GROUP, rue Emile Zola - 42420 Lorette - France
Tel: +33 (0)4 77 29 24 24 · Fax: +33 (0)4 77 29 24 45
haulotte@haulotte.com · www.haulotte.com

Haulotte 
EQUIPMENT