

HS21 E HS21 E PRO

ELECTRIC ROUGH TERRAIN
SCISSOR LIFTS



THE MARKET IS CHANGING

The construction and industrial sectors are evolving.

At the same time, expectations around performance, autonomy, and versatility haven't changed:

machines need to deliver, no matter the terrain or constraints.



THE RISE OF ELECTRIC MEWPS

Shifting toward electric equipment is no longer a future plan, it's already underway.

The challenge is clear: meet environmental demands while maintaining high productivity in all conditions, indoor or outdoor, rough or smooth terrain.

OUR RESPONSE:

PULSEO GENERATION

The **PULSEO** range was designed precisely in response to this new context. 100% electric, built for tough environments, and engineered for long duty cycles. No compromise. No limits.

Each model in the PULSEO family is a tool for moving forward: cleaner, quieter, and stronger.

With **PULSEO**, operations adapt seamlessly to the challenges of modern worksites: low-emission zones, early-morning starts in residential areas, and high-demand, all-day jobs.

Any concerns about autonomy? The Range Extender will add extended duty cycle.

[Learn more...](#)



PULSEO SCISSORS RANGE



FULL ELECTRIC & ROUGH TERRAIN SCISSORS

PULSEO SCISSORS MODELS



MODELS	HS15 E	HS15 E PRO	HS18 E	HS18 E MAX	HS18 E PRO	HS21 E	HS21 E PRO
Working height	15 m (48 ft 8 in)		18 m (58 ft 6 in)			21,2 m (69 ft)	
Platform height	13 m (42 ft 8 in)		16 m (52 ft 6 in)			19,2 m (63 ft)	
Max working driving height	Full height		13 m (42 ft 8 in)	Full height	13 m (42 ft 8 in)	Full height	
Tilt capabilities	5° / 3°		5° / 2°	3,5° / 1,5°	5° / 2°	3,5° / 1,5°	
Tilt capabilities on outriggers	4° / 7°		4° / 7°	4° / 7°	4° / 7°	4° / 7°	

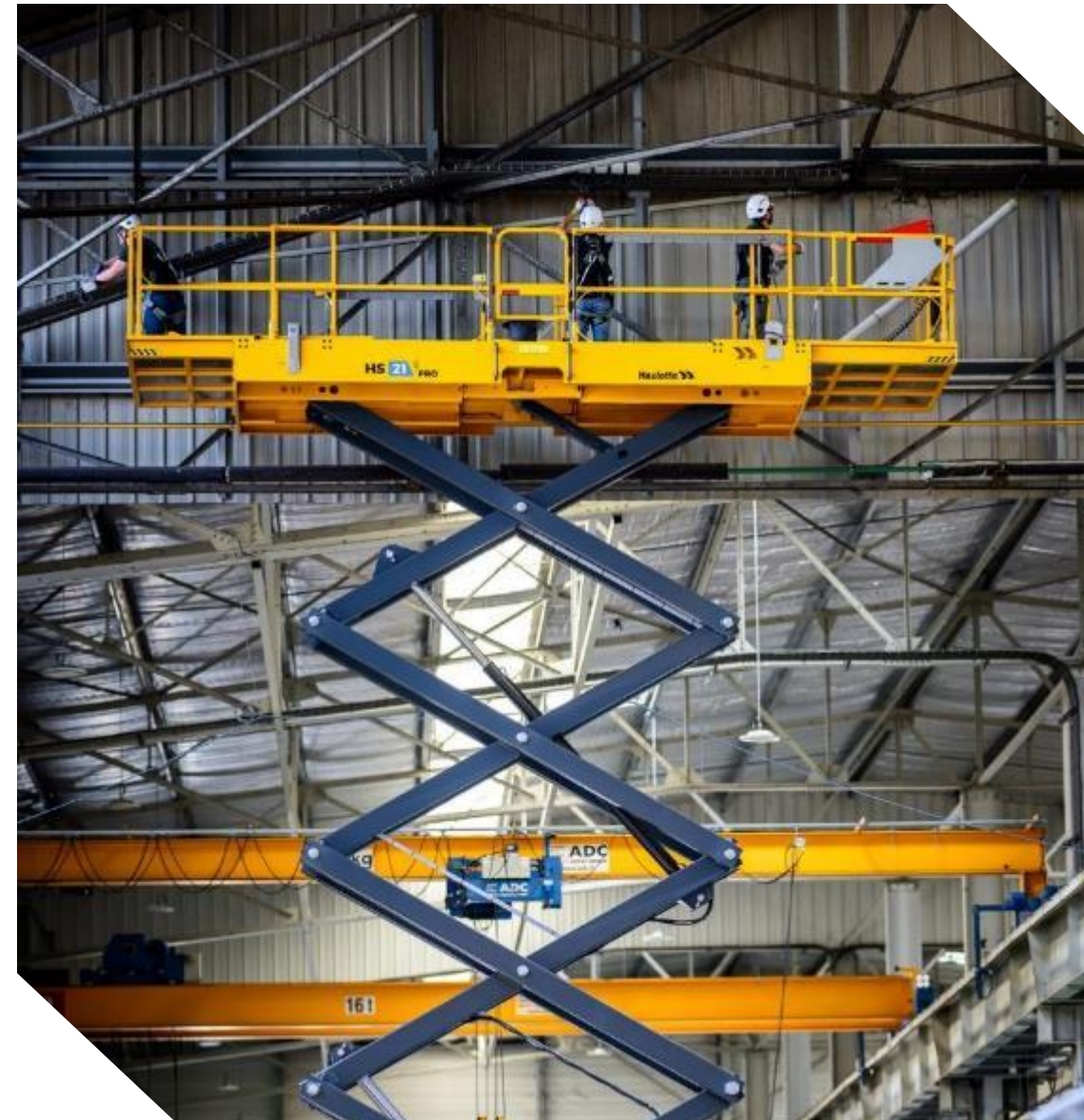
ELECTRIC ROUGH TERRAIN SCISSORS LIFTS, FOR WHAT APPLICATIONS?



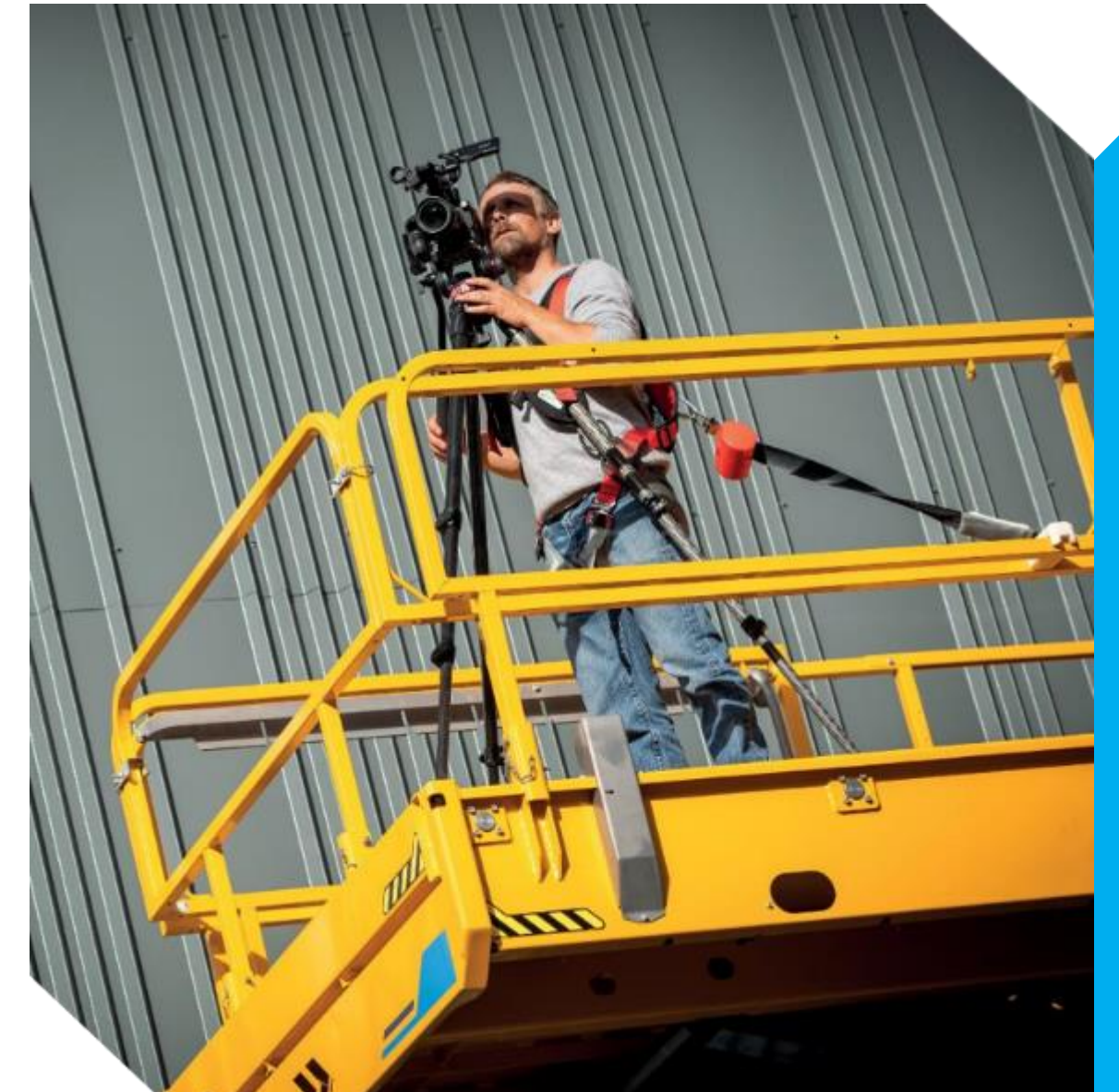
Heavy construction
Cladding, insulation, etc.



Finishing & Maintenance
Electricity, HVAC, plumbing,
painting, etc.

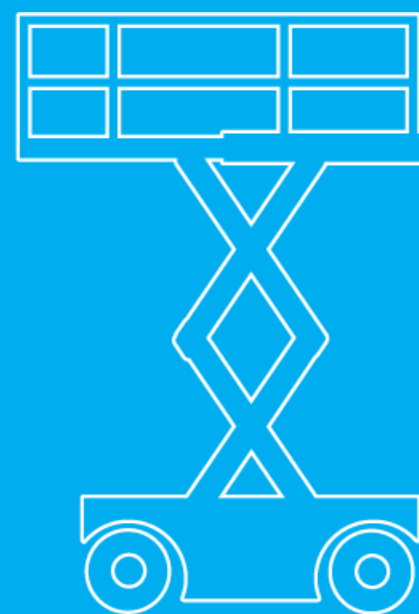


Specific industrial operations & events
Aviation, places prohibiting combustion
engines, etc.



NEW HS21 E & HS21 E PRO MAJOR BENEFITS

- ⚡ **Working height : 21,2 m**
- ⚡ **Load capacity: 4 people / 750 kg**
- ⚡ **4-wheel steering with auto alignment of the rear wheels**
- ⚡ **Driveable at full height**
- ⚡ **72V Lithium-ion batteries**
- ⚡ **Upper control box with screen**



21 M - MODELS & CONFIGURATIONS



	HS21 E	HS21 E PRO
Oscillating Axle	-	-
4-Wheel Drive	●	●
4-Wheel Steering	-	●
Self-aligning rear-wheels	-	●
Outriggers	●	●
Load capacity	750 kg (1650 lb)	750 kg (1650 lb)
72V Lithium-ion batteries	●	●
Swing door	○	○
Activ'Energy Management – SMART	●	●
Activ' Screen	●	●
Activ' Lighting System	○	●
Activ' Shield Bar	○	○
Accelerated charger (three-phased)	○	○
Range Extender	○	○
Leak containment system	○	○
Central tube holder	○	○
Access handles on platform plinth	○	○

- Standard
- Option
- Not available



EXPERIENCE HIGHER PRODUCTIVITY

PLATFORM CAPACITY OF 750KG

- **4 persons** in the platform
- **Central tube holder** (optional)
- **Material handling rack** (optional)

7,50m LARGE DECK

- **With 2 extensions** for extended workspace and outreach
- **Foldable guardrails** in 2 min - only 8 pins
- Made out of **easy to replace** aluminum plates

FULL HEIGHT DRIVE WITH NO LOAD RESTRICTIONS

- Authorized tilt: 3,5° / 1,5°

SILENT AND CLEAN OPERATIONS

- Ideal for both **indoor and outdoor** use

Watch the video now 

UPPER CONTROL BOX WITH SCREEN

A SOLUTION DESIGNED WITH THE OPERATOR IN MIND THAT STRENGTHENS INTERACTION WITH THE MACHINE

- 🔊 Designed as a **true co-pilot**, guiding the operator step-by-step to:
 - ensure quicker machine familiarization,
 - avoid handling errors,
 - reduce unnecessary machine lockouts,
 - limit calls to after-sales service.
- 🔊 Intuitive screen interface: Displays real-time information about the machine. It features **intelligent brightness management** for optimal readability in any conditions.
- 🔊 Self-adjusting interface: if the machine is not equipped with a specific function (such as the Range Extender), it won't appear on the screen, preventing any confusion for the operator.

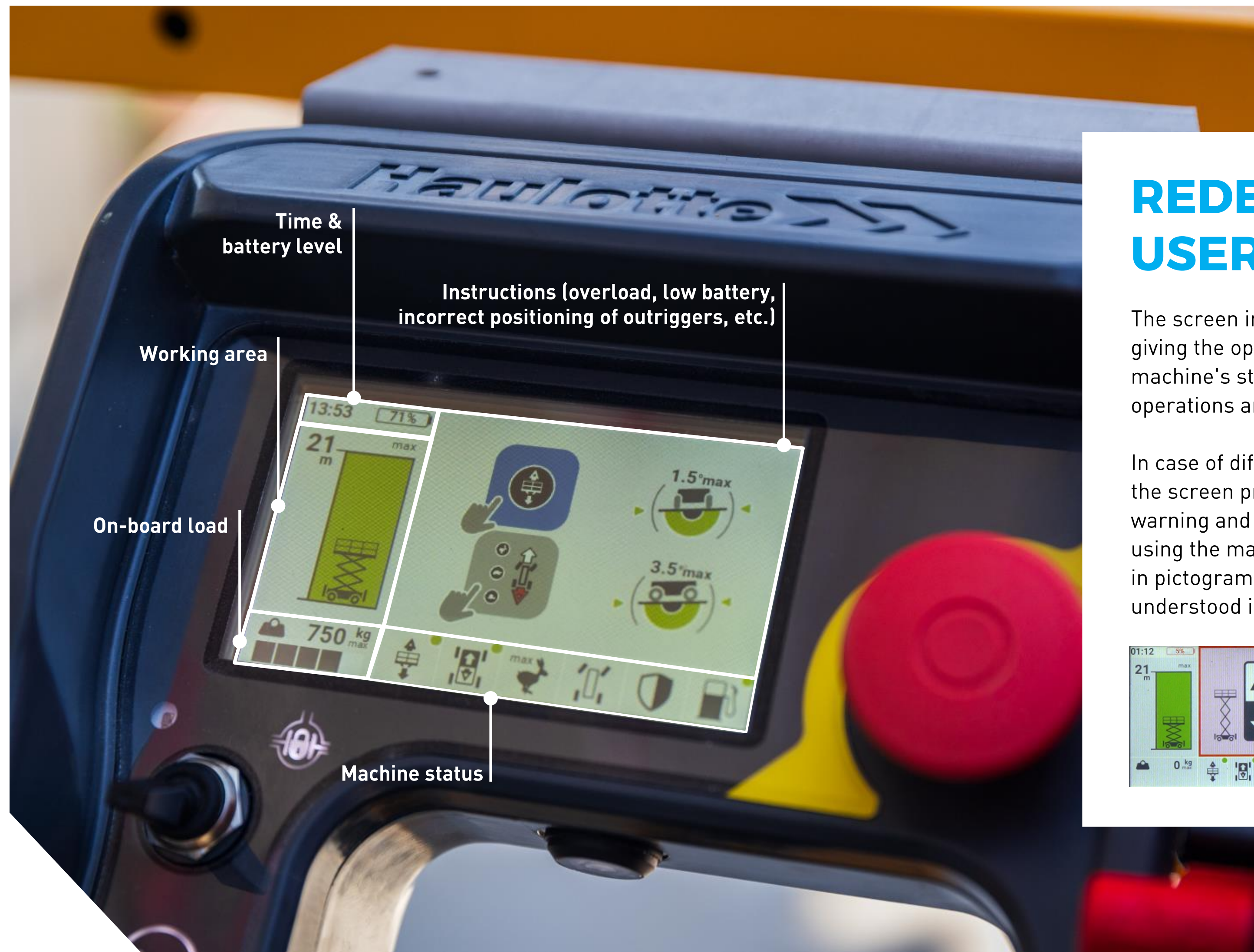




NEW UPPER CONTROL BOX WITH SCREEN

ROBUST, USER-FRIENDLY, AND EASY TO MAINTAIN FOR MAXIMUM DAILY PRODUCTIVITY

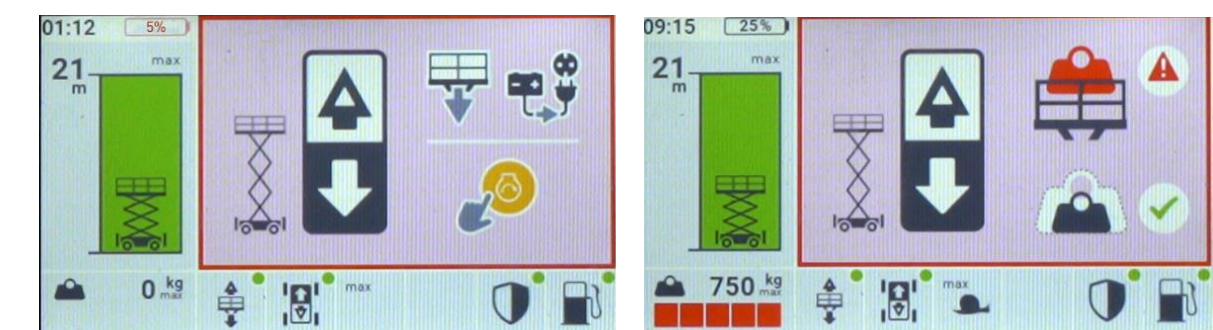
- 1** 4.3-inch color screen (non-touch)
Reinforced to resist shocks and scratches (IK9 rating)
- 2** Only 8 screws to access the electronic components
- 3** Removable joystick
- 4** Function not available on the machine:
command not visible



REDEFINING THE USER EXPERIENCE

The screen interface is divided into 5 areas, giving the operator a clear view of the machine's status regarding current operations and the working environment.

In case of difficulties (overload, low battery...), the screen provides the operator with an early warning and instructions on how to continue using the machine. Instructions are provided in pictograms and drawings to be fully understood in any operator's language.





EXPERIENCE DRIVING EFFICIENCY

Designed for rough terrain

- ⚡ **4-wheel drive and axle-based transmission**
for optimal traction and maximum torque
- ⚡ Climb slopes up to 38%
- ⚡ Tilt up to 3.5° longitudinally and 1.5° laterally
- ⚡ Manual and automatic differential lock for optimal grip

Even greater maneuverability with the PRO version

- ⚡ **4-wheel steering**
- ⚡ With such large scissors, wheels cannot be seen all at once. The **automatic rear-wheels alignment system** makes maneuvering easier both on the jobsite and during transport to load the machine back onto the truck.





EXPERIENCE THE POWER OF 100% ELECTRIC

⚡ 3 days of autonomy in electric mode and up to 9 additional days with the Range Extender on a single fuel tank

⚡ 100% electric motor, suitable for both indoor and outdoor use (IN/OUT)

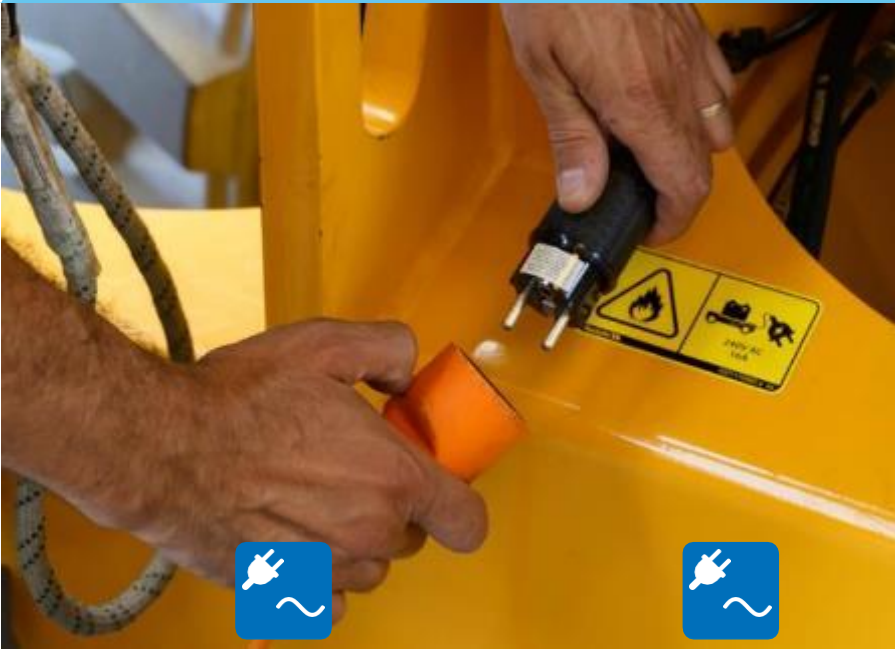
⚡ Non-marking tires available as an option
perfect for sensitive surfaces

*Unlimited duty cycle thanks to the Range Extender, which can be refilled at any time

EXTEND YOUR DUTY CYCLES



CHARGER (machine plugged to the main)



RANGE EXTENDER



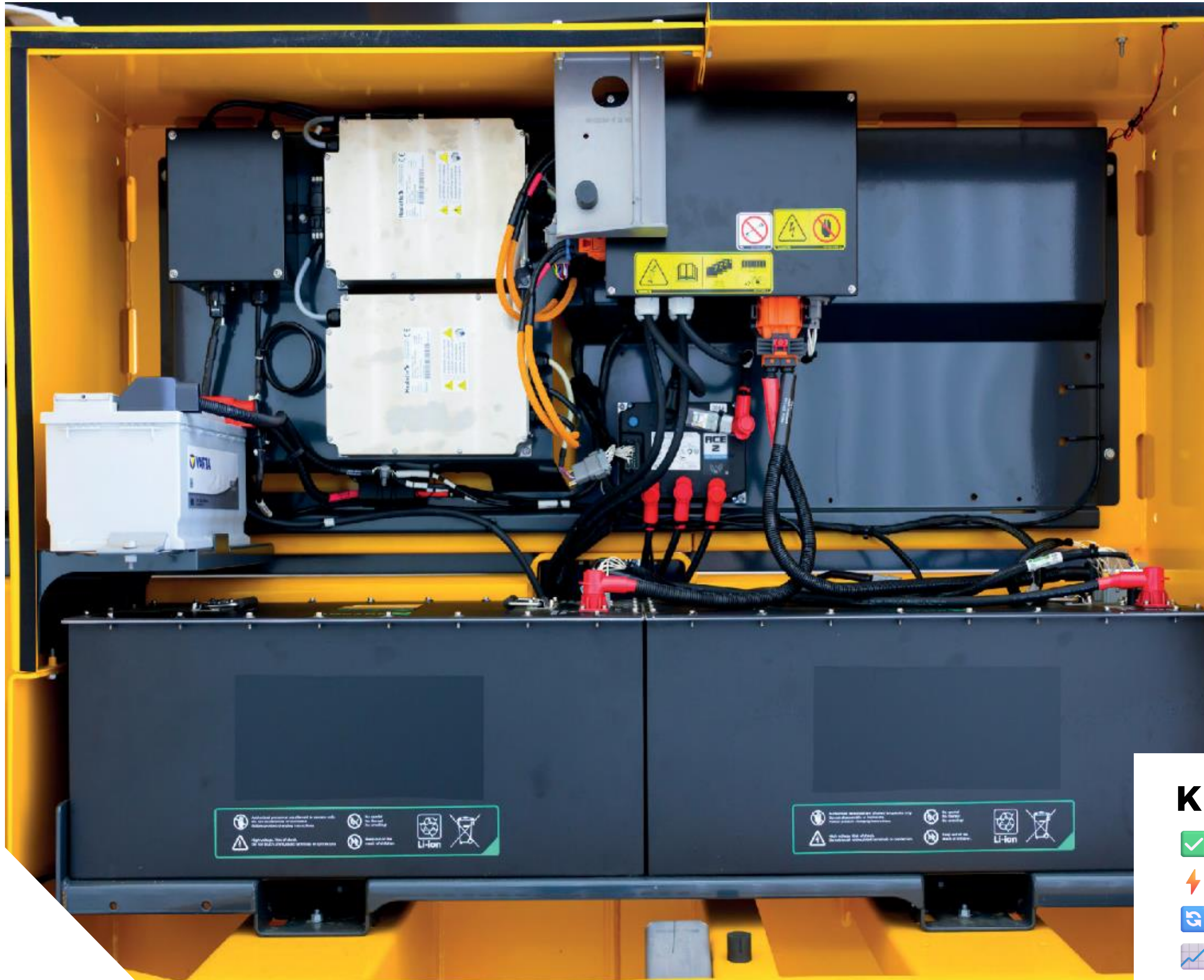
Power delivered	230V (worldwide except US)	110V (for US)	Three-phased 380 V (worldwide except US)	Three-phased 240V (for US)	Three-phased
Availability	Equipped as standard. 230V or 110V depending on country		Option requires three-phased specific plugs on jobsites		With the REX attached, you can work indefinitely, as long as there is fuel

STANDARD CHARGE

ACCELERATE CHARGING

HS21 E						
Maximum charge duration* from 20% to	80%	4 h 15	4 h 30	2 h 00	2 h 00	2 h 45
	100%	6 h 10	12 h 20	3 h 20	3 h 20	4 h 00

LITHIUM-ION BATTERIES: **RELIABILITY, AND INNOVATION**



EXTENDED AUTONOMY & LONG-LASTING PERFORMANCE

Thanks to their advanced technology, Lithium-ion batteries deliver:

- **Extended autonomy** to work all day without performance drop-off
- **Faster charging times** compared to conventional lead-acid batteries
- **The flexibility to recharge at any time**, even partially, with no full-cycle requirement

The result: increased machine uptime and optimized productivity on job sites. **Built to last, they offer a service life of up to 10 years**, several times longer than traditional batteries, significantly reducing replacement and maintenance costs.

KEY BENEFITS:

- ✓ Up to **10 years** lifespan
- ⚡ **Faster charging** compared to lead-acid batteries
- 🔄 **Recharge at any time**, no cycle constraints or performance loss
- 📈 Consistent performance, even at **low state of charge**

LITHIUM-ION BATTERIES: **RELIABILITY, AND INNOVATION**



ZERO MAINTENANCE & UNFAILING RESISTANCE

Lithium-ion batteries are completely maintenance-free: no water refilling, no corrosion risks, no servicing constraints. This ensures **time savings, enhanced safety, and peace of mind for operators.**

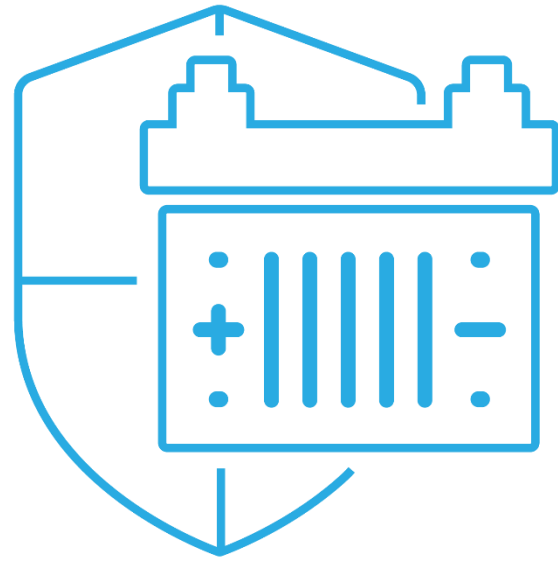
Their resilience to extreme temperatures (-25°C/+55°C) and heavy-duty usage (even with multiple charge cycles), guarantees uncompromised reliability in the toughest job site conditions. **Haulotte provides a 5-year warranty on Lithium-ion batteries**, ensuring long-term peace of mind.



KEY BENEFITS:

- ✓ **Zero maintenance** : no water, no corrosion, no constraints
- 🔒 **Enhanced security** : no exposure to corrosive substances
- 🏗️ **Proven robustness** under extreme conditions and intensive usage
- 🛡️ **5-year warranty** for total peace of mind

BATTERY MANAGEMENT SYSTEM (BMS): **SAFETY AT THE CORE**



Each lithium battery pack is equipped with a **Battery Management System (BMS)**. This electronic control unit acts as the **guardian of the battery**, ensuring the battery operates in the safest possible conditions.

The BMS performs **real-time monitoring** of key parameters:

- **state of charge,**
- **voltage, temperature,**
- **and health.**

By analyzing these values continuously, it prevents risks like overheating, overcharging, or deep discharging.

Through **CAN bus communication**, the BMS exchanges data with the machine and, if any anomaly occurs, it automatically adjusts operation to keep the pack safe and reliable.

Our lithium-ion batteries are certified to the **IEC 62619 safety standard**, guaranteeing compliance with the strictest international requirements.



INNOVATIONS FOR MORE PRODUCTIVITY



Haulotte Activ' Lighting System simplifies loading and unloading operations at night. 10 LED projectors effectively illuminate the control panel and the machine's working area.



The Haulotte Activ'Screen interface provides real-time access to key machine status information. The Activ'Screen supports the operator in all daily maintenance operations and the technicians in advanced diagnosis of the machine.



Haulotte Activ'Shield Bar system efficiently protects the driver from being crushed. If in danger, the driver is pushed against the bar and the machine automatically stops. The safety gap protects the driver.



MATERIAL HANDLING RACK

A truly innovative solution designed to optimize the transport of heavy materials on your job sites.

Quick installation: only 10 minutes 

Easy to use: safely transports various loads while maintaining an organized and efficient work environment

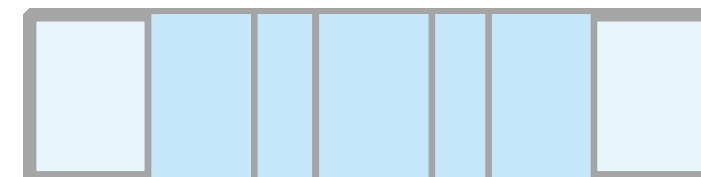
Ideal for demanding applications (pipe or panel installation), it quickly becomes a must-have to boost your machine's productivity.

Technical specifications: 2 configurations allowed

Maximum load capacity: **400 kg**

Maximum number of operators on the platform: 

Compatible with: **XL platform with 2 extensions**



SHERPAL

by Haulotte

YOUR CONNECTED COMPANION

SHERPAL is the essential connected ally for exploiting the full potential of your PULSEO scissors.

By offering real-time monitoring, remote diagnostics and optimized management, **SHERPAL** helps extend equipment life, reduce maintenance costs and make your jobsites safer.

With SHERPAL, boost your productivity while controlling your operations.



HS21 E KEY POINTS

- 1. 21m – full height drive with full load**
- 2. 750 kg (1 650 lb) in the basket and extra large platform**
- 3. 4-wheel steering with auto alignment of the rear wheels**
- 4. 72V lithium-ion batteries**
 - Up to 10 years lifespan
 - Fast charging
 - Recharge at any time
 - Maintenance free
- 5. Upper control box with screen**
 - Gives operator clear guidance at the right time
 - Avoid service calls for easily fixed issues (tilt, overload...)
- 6. 7.5 m XL deck floor**
 - Made out of easy to replace tear drop aluminium plates
 - Folding guardrails : 8 pins to unfold easily
- 7. 4-wheel drive**
38% gradeability
Automatic and manual differential lock
Mechanical axle
- 8. Haulotte Activ'Screen, Activ'Lighting System, Activ'Shield Bar**
- 9. Range Extender compliant**
- 10. Sherpal telematics solution**



PULSEO
GENERATION

**EXPERIENCE
NEW HEIGHTS**

HAULOTTE GROUP, rue Émile Zola - 42420 Lorette - France
Tel: +33 (0)4 77 29 24 24 · Fax: +33 (0)4 77 29 24 45 · haulotte@haulotte.com · www.haulotte.com

Haulotte 
EQUIPMENT

Non contractual document. We reserve the right to modify the technical specifications of this document without prior notice.
Credits: @LionelSouci @AlexandreVermorel @Haulotte. 10/2025