



# ARTICULATING & TELESCOPIC BOOMS ALL-TERRAIN DIESEL

---

RTJ PRODUCT LINE  
16 TO 28 METERS

[haulotte.com](https://haulotte.com)

**Haulotte**   
EQUIPMENT



## CONTENTS

**APPLICATIONS..... 4**

**BENEFITS..... 7**



**OPTIMAL SAFETY..... 8**



**OUTSTANDING PRODUCTIVITY ..... 12**



**EXCELLENT ALL-TERRAIN  
CAPACITIES ..... 17**



**SUSTAINABLE DESIGN ..... 21**



**MAXIMIZED UPTIME ..... 24**

**MODELS & OPTIONS ..... 27**



With more than 30 years of experience designing booms, Haulotte is no stranger to the obstacles associated with operation and fleet management.

Our RTJ range of articulating and telescopic booms is designed to work in the most restrictive environments and tackle the most demanding projects.

RTJ booms incorporate our latest innovations to offer you the safest solutions on the market for working at heights, increase the productivity of your construction sites and optimize the uptime of your machines.

TAKE ADVANTAGE OF  
**HAULOTTE** EXPERTISE

---

## APPLICATIONS

# OPT FOR **VERSATILITY**



### CONSTRUCTION: BUILDING SHELL

Structural steel, siding, masonry, etc.



### CONSTRUCTION: FINISHING

Electrical, HVAC, insulation, painting, etc.



### MAINTENANCE AND UPKEEP

Plumbing, electrical, industrial cleaning, etc.



## APPLICATIONS



### SPECIFIC INDUSTRIAL OPERATIONS

Mining, airport applications, etc.



### LANDSCAPING WORK

Pruning and green spaces.



### EVENTS

Concert halls, stadiums, etc.



## APPLICATIONS



### TELESCOPIC BOOMS

Telescopic architecture allows for straight and direct elevation.

#### Benefits:

- > **Extended horizontal outreach** for access to the most remote work areas.
- > **Ease of use** for greater efficiency.



### ARTICULATED BOOMS

The articulating architecture features a boom arm with a pivot point.

#### Benefits:

- > **Ability to extend above obstacles** to reach the most inaccessible work areas.
- > **Work in highly confined areas** thanks to a more compact architecture.

## CHOOSE THE RIGHT ARCHITECTURE

Designed to operate anywhere, even on the roughest terrain, Haulotte diesel articulating and telescopic booms offer a number of shared benefits. The most suitable architecture for you depends on the layout of your work area.

## BENEFITS



### OUTSTANDING PRODUCTIVITY

- > Haulotte Dual Load: load up to 450 kg\* in the basket
- > Haulotte Extra Reach: load up to 350 kg in the basket and enhance productivity on sloping ground (up to 6°)
- > Rapid, simultaneous movements
- > 360° continuous rotation
- > Better working envelope
- > Sherpal: telematics solutions for optimized machine use



### OPTIMAL SAFETY

- > Haulotte Activ'Shield Bar 2.0 prevents crushing risks
- > Haulotte Activ'Lighting System ensures safety during nighttime loading and unloading operations
- > Proportional movements for greater precision and safety
- > Reflective stickers for greater visibility in the work area



## GET THE BEST FROM THE RTJ RANGE



### EXCELLENT ALL-TERRAIN CAPACITIES

- > 4-wheel steering / 4-wheel drive
- > Oscillating axle
- > Up to 45° slope climbing capacity



### MAXIMIZED UPTIME

- > Haulotte Activ'Screen: on-board intuitive diagnostic interface
- > Haulotte Diag: wireless configuration and diagnostics
- > Easy access to components



### SUSTAINABLE DESIGN

- > Haulotte Stop Emission System reduces engine and component use
- > Impact protection for exposed components

\* Load capacity depending on models, more details on page 29.



# OPTIMAL SAFETY



**OPTIMAL  
SAFETY**

## WORK IN COMPLETE **SAFETY**

---

Our teams go beyond mere compliance with regulatory standards, constantly innovating to offer the safest machines on the market.

### **PRECISE MOVEMENTS**

Proportional controls ensure precise movements, guaranteeing smooth operation on the way up to the work area. No jolts, just fluid motion.



**AT HAULOTTE,  
OPERATOR SAFETY IS OUR  
NUMBER ONE PRIORITY**



**OPTIMAL  
SAFETY**

## WORK IN COMPLETE SAFETY

**Haulotte**   
**ACTIV' SHIELD**  
B A R

**EXCLUSIVE TECHNOLOGY**

### SECONDARY GUARDING DEVICE

Haulotte Activ'Shield Bar 2.0 is by far the safest and most effective system of its kind. Faced with a risk of entrapment, the operator is propelled against the bar. The machine automatically stops. Protected by the Safety Gap, the operator maintains easy access to controls with unobstructed visibility.



#### **BUFFER ZONE**

to prevent inadvertent activation.



#### **STOP POSITION**

to immediately stop the machine.  
Only safe movements intended to move away from the obstacle remain possible.



#### **SAFETY GAP**

with wide clearance of the bar to prevent driver entrapment and enable the driver to adopt a safe position inside the basket if necessary.



**OPTIMAL  
SAFETY**



Illuminated controls  
on the upper and  
lower control box



Automatic activation  
with the twilight sensor



Illuminated area  
around the machine

## **SAFE OPERATIONS IN LOW VISIBILITY CONDITIONS**

**Haulotte**   
**ACTIV' LIGHTING**  
SYSTEM

**EXCLUSIVE TECHNOLOGY**

### **ULTRA-HIGH-PERFORMANCE LIGHTING SYSTEM**

Booms are generally loaded and unloaded early in the morning or in the evening. To ensure safe performance of these delicate procedures, RTJ models feature the innovative high-performance Haulotte Activ' Lighting System. Comprising 10 LED spotlights, it provides ideal illumination of the basket, controls and the maneuvering area around the machine. For greater visibility on site, HA20 RTJ / HA20 RTJ PRO models feature 2 reflective stickers on the counterweight.



Reflective  
stickers

# OUTSTANDING PRODUCTIVITY



**OUTSTANDING  
PRODUCTIVITY**

**QUICK AND  
EASY ACCESS  
TO THE  
WORK AREA**

---



### **BETTER WORKING ENVELOPE**

Featuring the best working envelope on the market, RTJ booms let you reach the most inaccessible areas. On articulating booms, the height of the up and over clearance makes it possible to clear even the highest obstacles.

### **SIMULTANEOUS MOVEMENTS AND 360° ROTATION**

Ultra-fast elevation speed combined with simultaneous movement controls and 360° turret rotation let you reach the work area quickly for greater efficiency.



**OUTSTANDING  
PRODUCTIVITY**



## **BOOST YOUR PRODUCTIVITY**

On the construction site, many situations require the loading of a large weight in the platform. Difficult terrain means having to move on slopes. To overcome these problems and boost your productivity, Haulotte has created two innovations for the various models in the RTJ range.

### **TANGIBLE BENEFITS ON THE JOB SITE:**

- > Save time by limiting the number of round trips between the ground and the work area
- > Work safely by avoiding unsafe practices
- > Increase load capacity for better productivity
- > Access and work on floors with more slopes

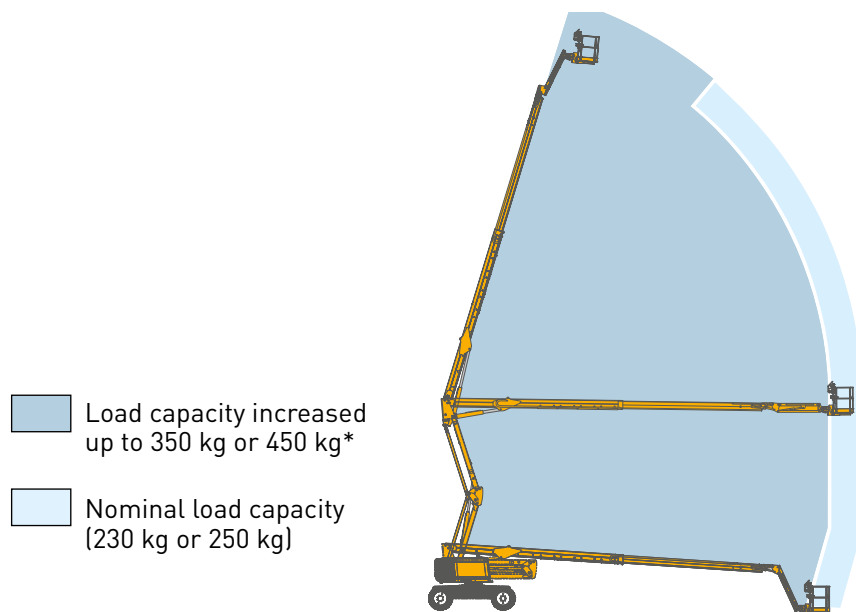


**OUTSTANDING  
PRODUCTIVITY**

## INCREASE LOAD CAPACITY

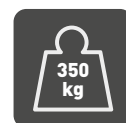
### Haulotte **DUAL** LOAD

Haulotte Dual Load allows you to increase the load in the basket up to 350 kg or 450 kg\*. The working envelope is reduced in this case to guarantee the stability of the machine.



### Haulotte **EXTRA** REACH

Haulotte Extra Reach allows you to increase the load in the basket from 250 kg to 350 kg while working on sloping ground. The machine continues to rise and work on a maximum 6° slope (longitudinal or lateral).



**Maximum  
load capacity  
350 kg**



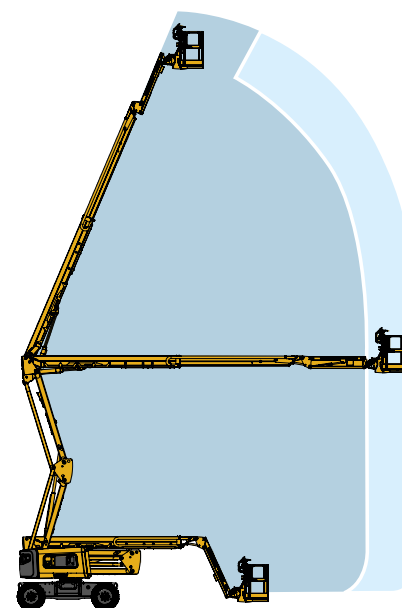
**Tilt 6°**



Load capacity increased up to 350 kg and 6° tilt



Nominal load capacity of 250 kg and 4° tilt



\* Load capacity depending on models, more details on page 29.



# EXCELLENT **ALL-TERRAIN** CAPACITIES



OUTSTANDING  
ALL-TERRAIN CAPACITY

## ENJOY **EXCEPTIONAL** DRIVABILITY

RTJ models always feature 4-wheel drive to operate anywhere, even on the roughest terrain.

### **EXCELLENT TERRAIN FOLLOWING**

- > **The oscillating axle** adjusts the position of the axle to adapt to the terrain and keep the wheels in contact with the ground,
- > **The solid cured-on tires\*** are extremely sturdy, hugging the ground and absorbing shocks. They are also available in markless version for use on sensitive floors or those whose appearance require special care,
- > **The limited-slip differential** adjusts the speed of each wheel, preventing the loss of traction...

### **...ON LOW TRACTION SURFACES...**

- > **The differential lock** offers additional traction on loose or slippery surfaces. By locking the differential, power is transmitted to each wheel to power the machine through challenging terrain.

Solid cured-on tires

Oscillating axle

\* The HT23 model is equipped with foam-filled tires



## OUTSTANDING ALL-TERRAIN CAPACITY



**DIFFERENT  
STEERING  
MODES TO SUIT  
ANY SITUATION**

**Enjoy greater agility thanks to 4-wheel steering:**

> **In 4-wheel steering mode**, the turning radius is shortened, enabling you to maneuver in tight or congested spaces.

## SUPERIOR DRIVABILITY



> **Crab steering** lets you move in any direction, making it easier to access the work area.



Haulotte

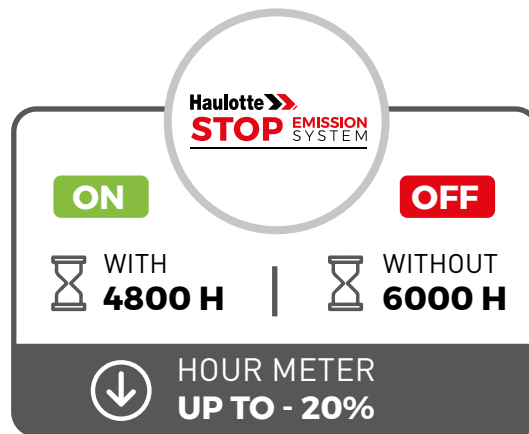
# **SUSTAINABLE DESIGN**



## SUSTAINABLE DESIGN

# OPTIMIZE YOUR TOTAL COST OF OWNERSHIP

When operators are working at heights, booms may remain immobile for several hours.



**Haulotte**   
**STOP** EMISSION  
SYSTEM

EXCLUSIVE TECHNOLOGY

## START & STOP SYSTEM

The RTJ range is equipped with the Haulotte Stop Emission System, which automatically stops the engine after a period of idle running. The engine instantly restarts when the operator performs an action.

## OPTIMIZED TOTAL COST OF OWNERSHIP

- > Use of the engine and peripheral components reduced by up to 20%,
- > Lower fuel consumption,
- > Longer intervals between maintenance,
- > Greater residual value.

## RESPECTFUL OF THE ENVIRONMENT AND PEOPLE NEARBY

- > Reduced air and noise pollution,
- > Greater comfort for people living or working in the area.



## SUSTAINABLE DESIGN

# SIMPLIFY MAINTENANCE OPERATIONS

Components requiring regular maintenance are easily accessible, thus making maintenance operations simple and less time-consuming.

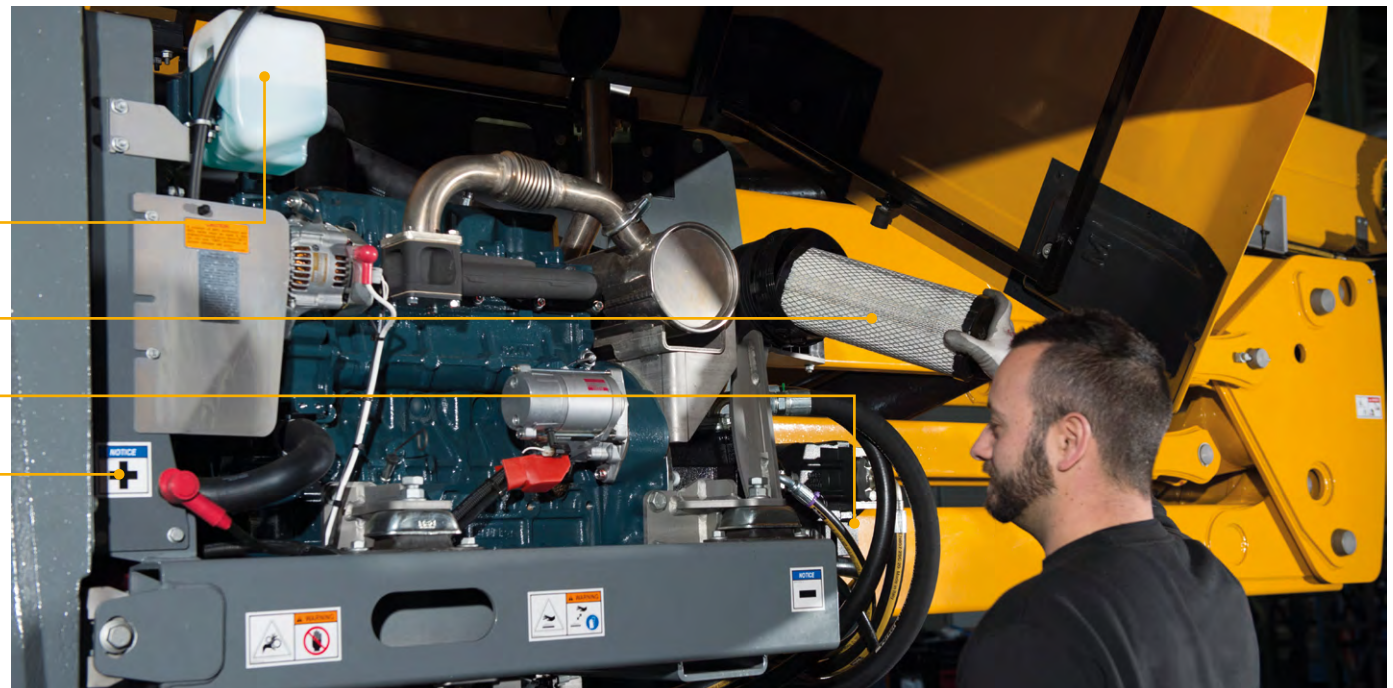


Coolant tank

Air filter

Fuel filter

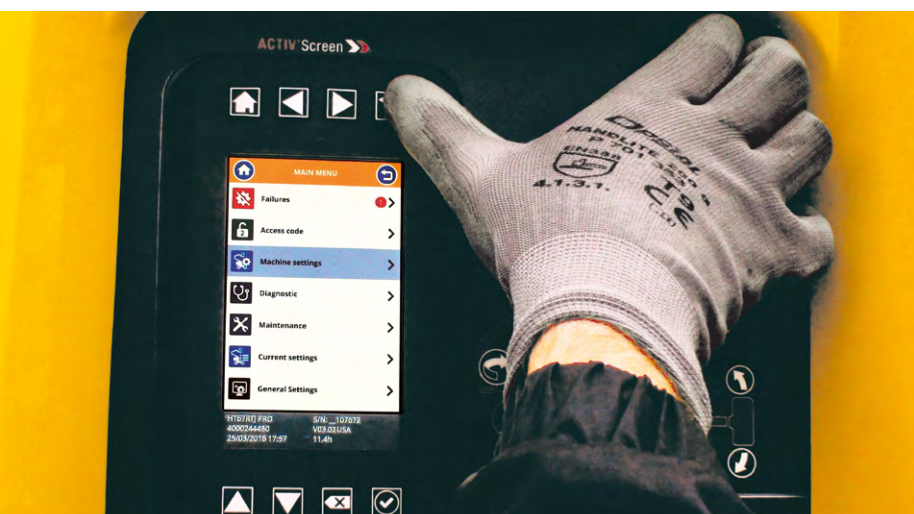
Battery



**MAXIMIZED  
UPTIME**

24 MAXIMIZED  
UPTIME

# MAXIMIZE THE UPTIME OF YOUR FLEET



**Haulotte**   
**ACTIV' SCREEN**

EXCLUSIVE TECHNOLOGY

## ON-BOARD CONFIGURATION AND DIAGNOSTIC TOOL

Haulotte Activ'Screen makes life easier for users and technicians on a daily basis, providing access to:

- > Machine configuration,
- > Information on machine functioning (tilt sensing, overloading, fuel level),
- > Preventative maintenance operations,
- > Diagnosis of malfunctions and instructions for resolution.



## ALL FUNCTIONS AVAILABLE ON THE GO



All Haulotte Activ'Screen functions are available on the mobile app: Haulotte Diag. Technicians enjoy wireless mobility for conducting more effective configuration and diagnostics.

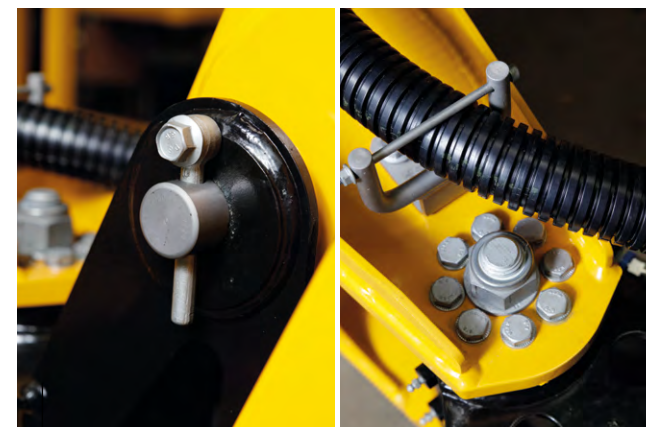
# WORK IN THE MOST RESTRICTIVE ENVIRONMENTS



**ULTRA-DURABLE PROTECTIVE HOUSING  
AND TOOL TRAY** made of composite material



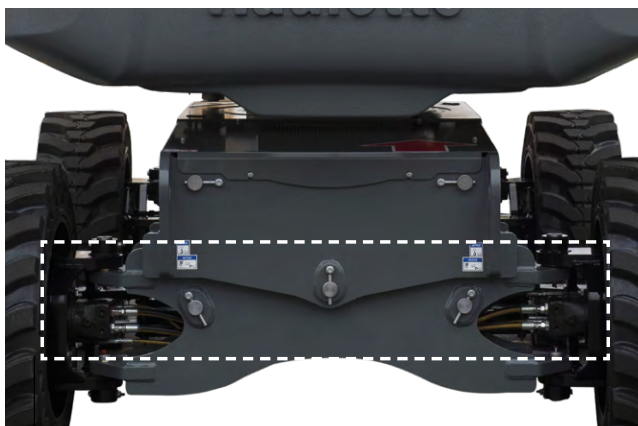
**REINFORCED TURRET HOODS**  
with metal support framework



**ANTICORROSION TREATMENT** on axles,  
fasteners and painted components.  
Built to withstand 500h salt spray test



**LOAD SENSING SYSTEM PROTECTED**  
within the platform yoke assembly



**STEERING CYLINDERS PROTECTED**  
inside the frame



**BOOM PROTECTED** by the counterweight frame

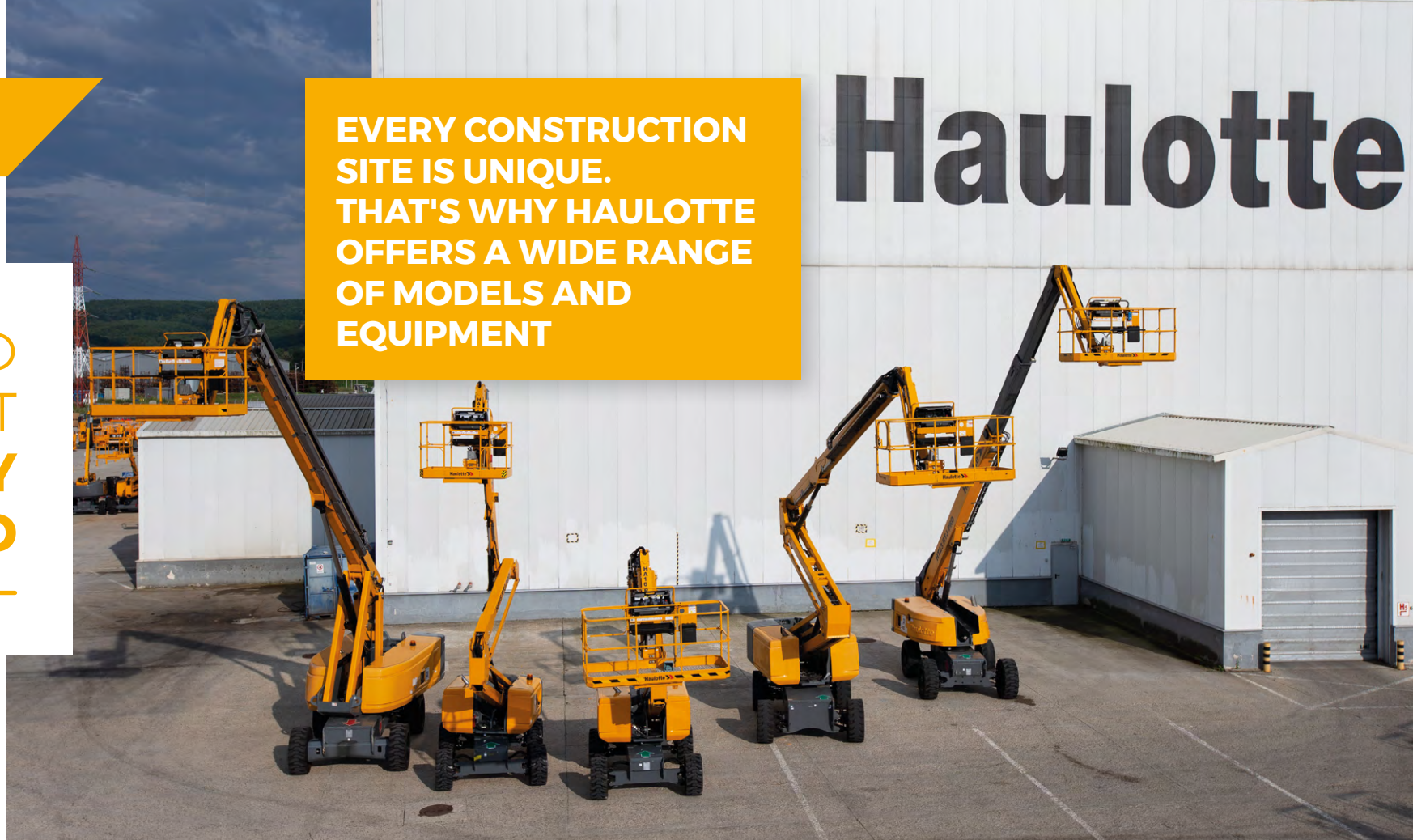
# MODELS & OPTIONS

## MODELS & OPTIONS

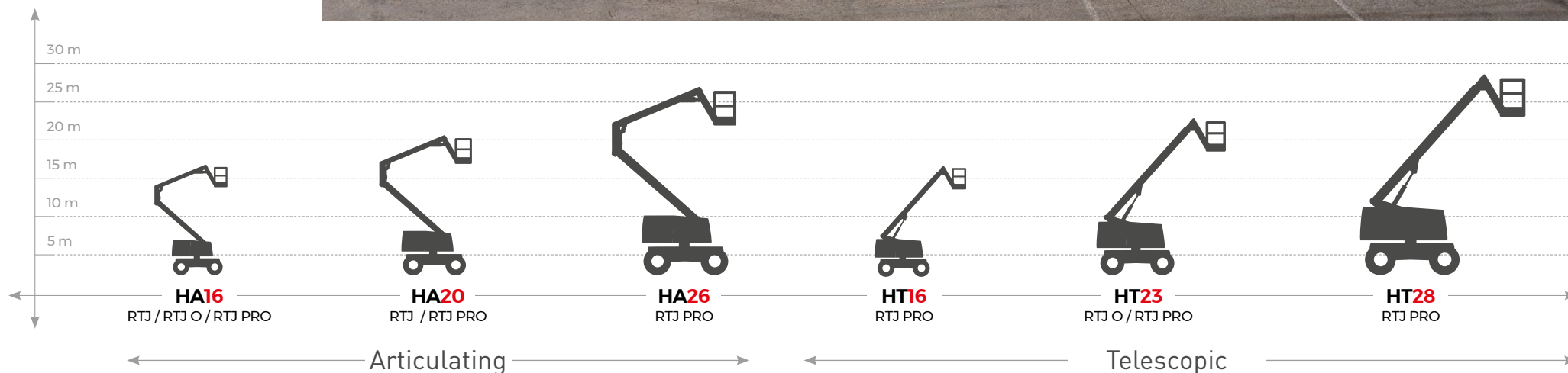
DESIGNED  
TO MEET  
**YOUR EVERY  
NEED**

EVERY CONSTRUCTION  
SITE IS UNIQUE.  
THAT'S WHY HAULOTTE  
OFFERS A WIDE RANGE  
OF MODELS AND  
EQUIPMENT

# Haulotte



### 6 MODELS



Availability of models may vary by region. Please contact your Haulotte representative.

## MODELS & OPTIONS

# CHOOSE THE VERSION BEST SUITED TO YOUR NEEDS

		HA16			HA20		HA26	HT16	HT23		HT28
		RTJ	RTJ O	RTJ PRO	RTJ	RTJ PRO	RTJ PRO	RTJ PRO	RTJ O	RTJ PRO	RTJ PRO
CAPACITY	Working height	16 m			20.5 m		26.4 m	16.1 m	22.5 m		27.9 m
	Up and over clearance	7.65 m			8.5 m		9.3 m	-	-		-
	Maximum outreach	8.3 m			11.9 m		17.5 m	13 m	18.3 m		23.9 m
	Basket load capacity	230 kg 2 pers.			250 kg 2 pers.		250 kg 2 pers.	250 kg 2 pers.	230 kg 2 pers.		230 kg 2 pers.
	Dual Load	-			-		○ 350 kg 2 pers.	○ 350 kg 2 pers.	○ 450 kg 3 pers.		○ 350 kg 2 pers.
	Extra Reach	-			○ 350 kg / 6° 2 pers.		-	-	-		-
	Maximum wind speed	45 km/h			45 km/h		45 or 60 km/h	45 km/h	45 or 60 km/h		45 or 60 km/h
EQUIPMENTS	Wheel-steer	2	2	4	2	4	4	4	2	4	4
	Tires	Solid			Solid		Solid	Solid	Foam-filled		Solid
	Oscillating axle	-	●	●	-	●	●	●	●	●	●
	Turret rotation	355°	355°	360° cont.	355°	360° cont.	360° cont.	360° cont.	360° cont.	360° cont.	360° cont.
	Jib	●	●	●	●	●	●	●	●	●	●
INNOVATIONS	Activ' Shield Bar 2.0	○	○	●	○	●	●	●	○	●	●
	Activ' Lighting System	○	○	●	○	●	●	●	○	●	●
	Activ' Screen	●	●	●	●	●	●	●	●	●	●
	Stop Emission System	●	●	●	●	●	●	●	●	●	●

● Standard / ○ Option / - Not available

## MODELS & OPTIONS

CHOOSE THE  
EQUIPMENT  
**SUITED**  
TO YOUR  
**BUSINESS**

---



### **CUSTOMIZE THE MODEL TO SUIT YOUR ENVIRONMENT**

- > Cold & Arctic weather package
- > Warm weather package
- > Anti-overspeed kit
- > Non-marking tires



### **INCREASE YOUR PRODUCTIVITY**

- > Haulotte Extra Reach
- > Haulotte Dual Load
- > Glazier pack
- > Pipe cradle
- > Compressed air line
- > 3.5, 6.5 or 12 kW hydraulic generator
- > AC power to platform

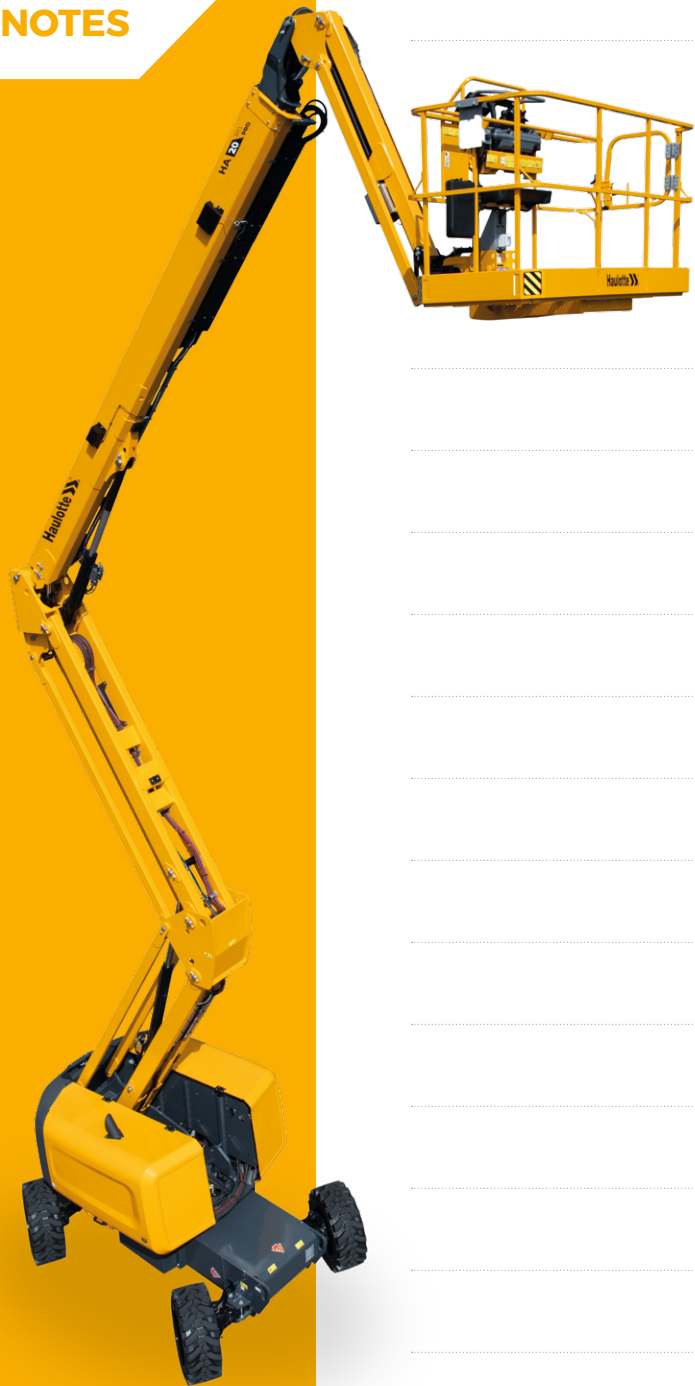


### **ENHANCE YOUR SAFETY AND COMFORT**

- > Haulotte Activ'Lighting System
- > Haulotte Activ'Shield Bar
- > Strong wind package
- > Lateral swing door
- > Circuit breaker or ground fault interrupter

Availability of optional equipment varies by model.  
Please contact your Haulotte representative.

NOTES





**HAULOTTE GROUP**, rue Emile Zola - 42420 Lorette - France  
**Tel:** +33 (0)4 77 29 24 24 · **Fax:** +33 (0)4 77 29 43 95  
[haulotte@haulotte.com](mailto:haulotte@haulotte.com) · [www.haulotte.com](http://www.haulotte.com)

**Haulotte**   
LET'S DARE TOGETHER