



# VERSALIFT

## VTX-240 G3

**Chassis mounted platform with two  
3-stage telescopic booms**



Reach worksites up  
and over obstacles



Reach worksites below  
the vehicle



Automatic setup and  
packing



2 x 90° bucket rotation



Shaped high strength  
steel boom profile



《VERSALIFT》

A **TIME** MANUFACTURING COMPANY

# VTX-240 G3 on Iveco e-Daily



(Photo may display options not included on the standard product)

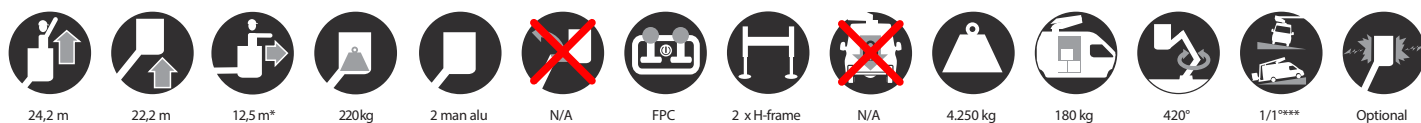
The VTX-240 has a unique capability of going up and over buildings, thus providing optimal working conditions in areas with low accessibility.

Can go 3,3 meters below ground level for bridge inspection etc.

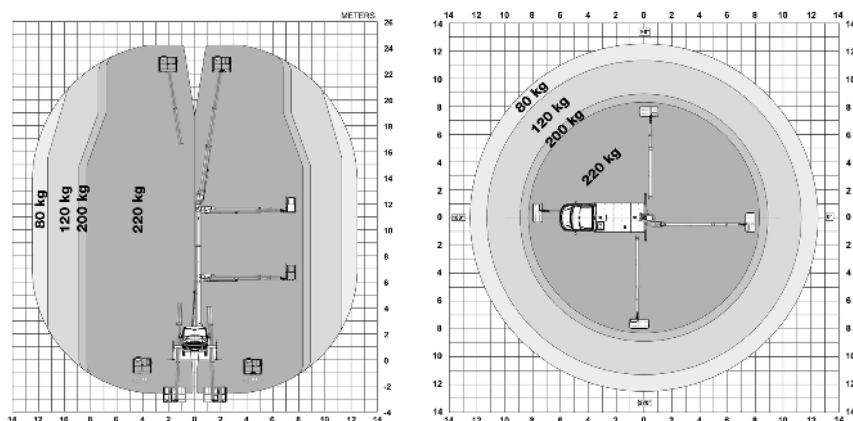
LCD display in both upper and lower control w. diagnostics and outrigger setup with the touch of a button.

• e-PTO driven lift

■ Length: 7620 mm ■ Height: 2230 mm ■ Wheelbase: 4100 mm



## Diagramme(s)

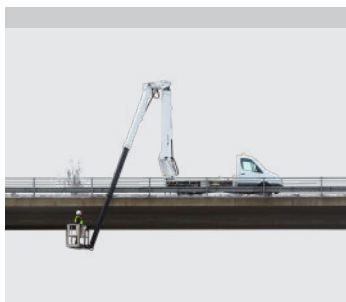


## Options

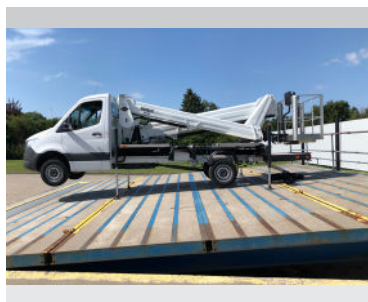
Outrigger pads with holders  
Safety stripes (red/white)  
Flashing lights on the vehicle  
Demo seat covers and floor mats  
Safety lanyard and harness  
For extra range, choose the E-tech VTX battery pack (passenger seat is removed by choosing this option)



Easy access to the charging socket located at the front



Ability to work below ground level (-3,3 meters)



6° leveling depending on vehicle position



HOME function for automatic setup and packing.

## Notes

Technical information is subject to change without prior notice. Images may show optional equipment. Installations and/or options may not be available in your specific region.

\* Depending on the vehicle.

\*\* Max payload with a driver, a passenger and a full tank of fuel (220 kg added to the installation weight).

\*\*\* Depending on the vehicle position

## Distributor

**Versalift International**  
Soendervang 3, 9640 Farsoe  
Denmark

+45 9863 2433  
sales@versalift.dk  
versaliftinternational.com